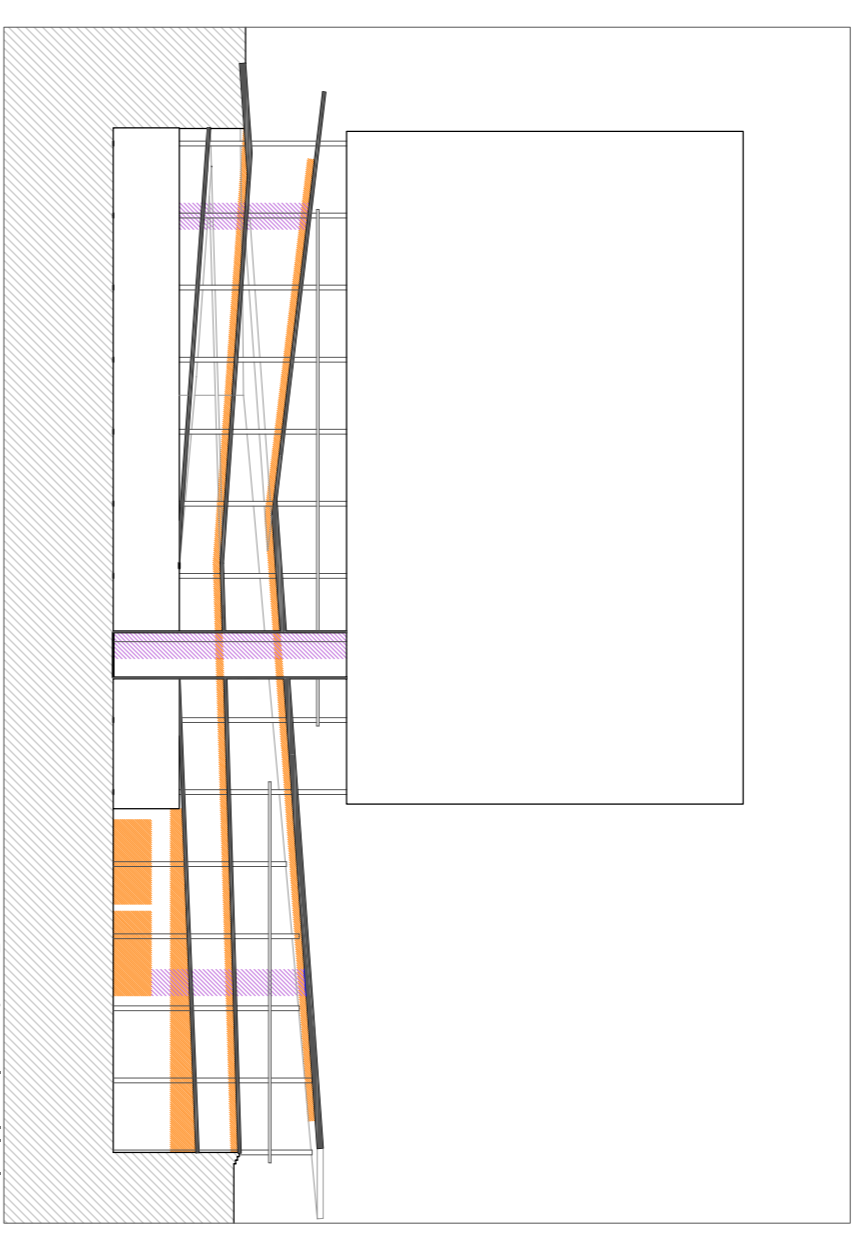
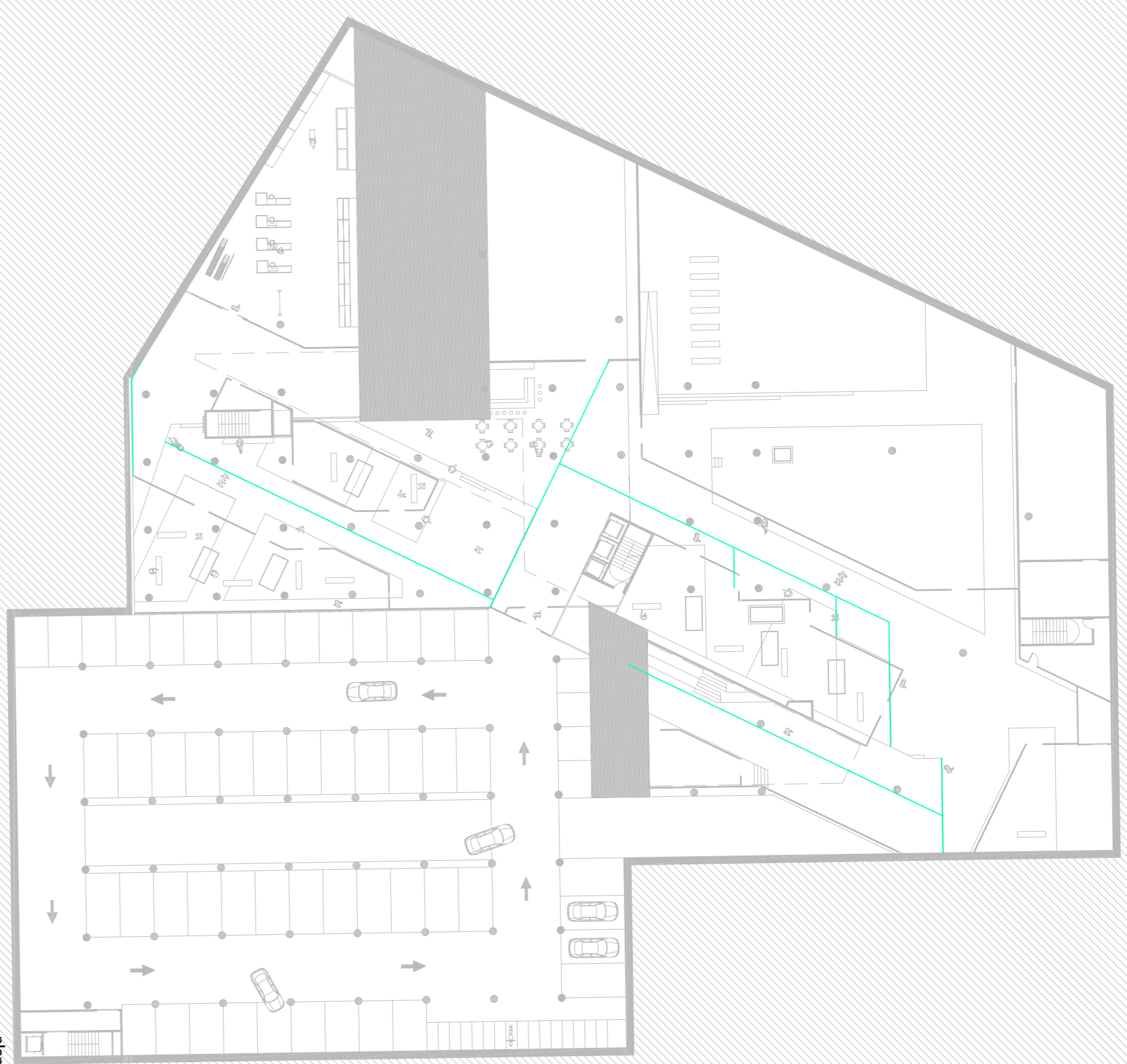


Nova sucursal de la Caja de Arquitectos de Madrid. Luis Martinez Santa-Maria

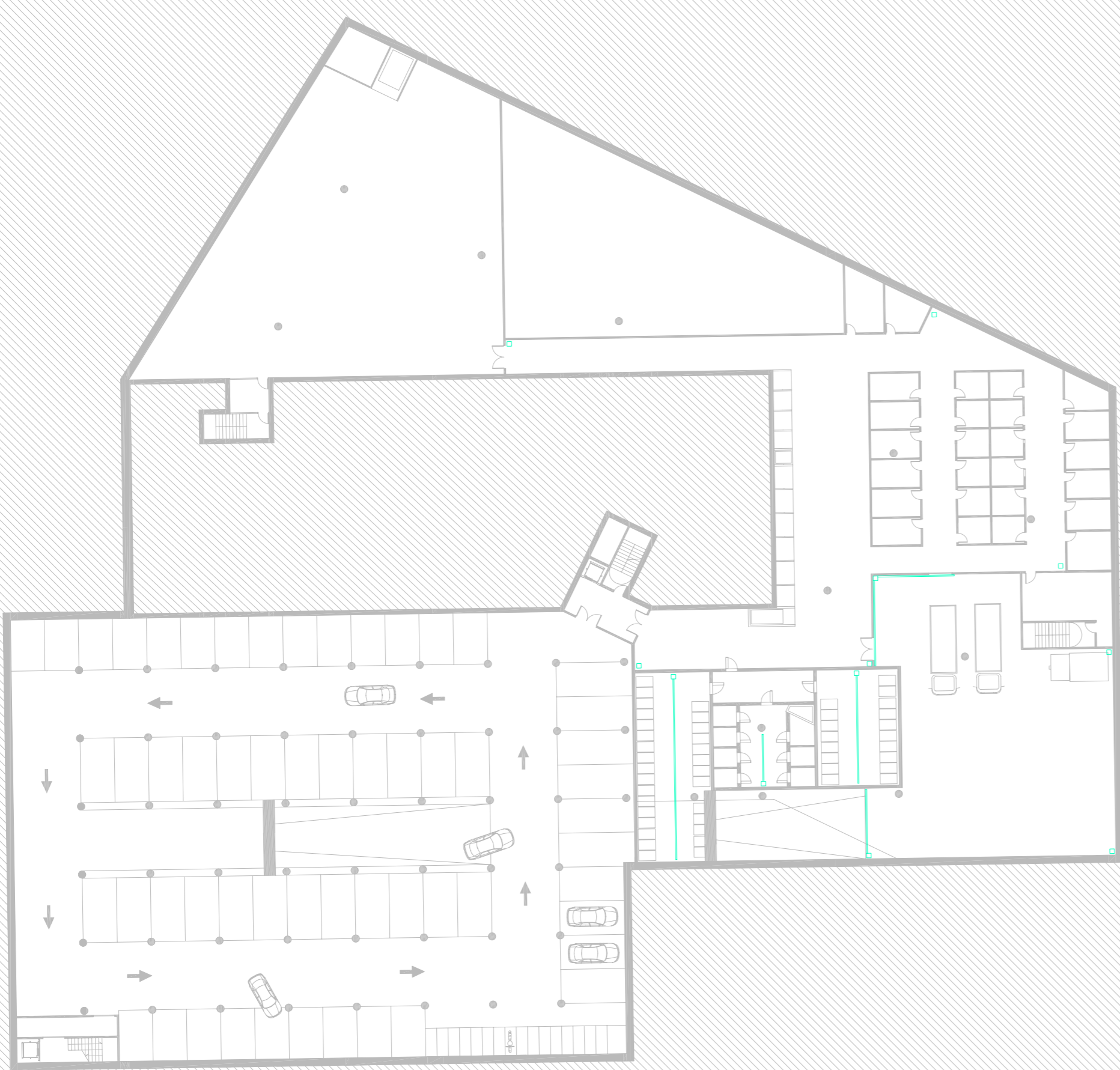
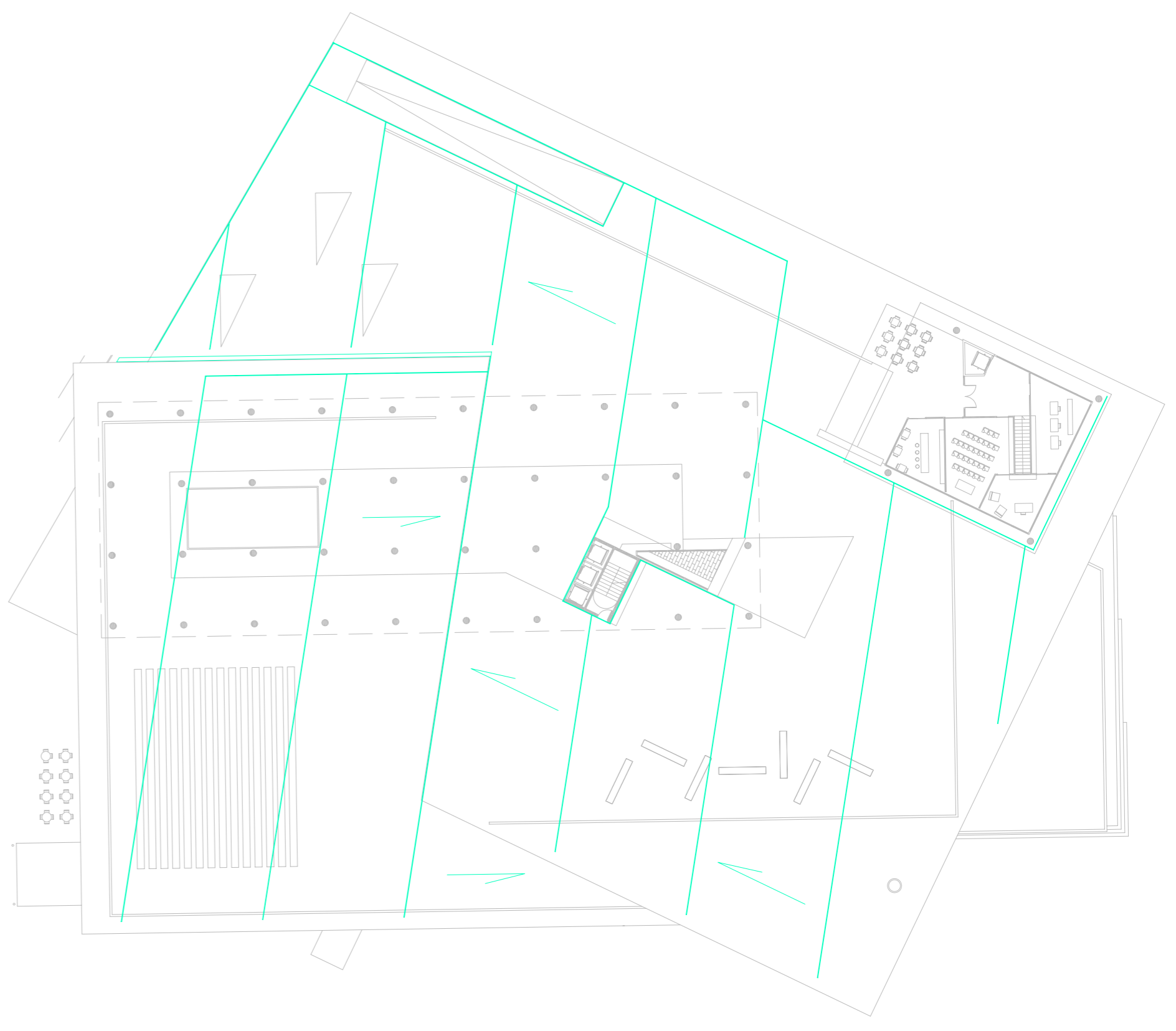


Pas de les instal·lacions



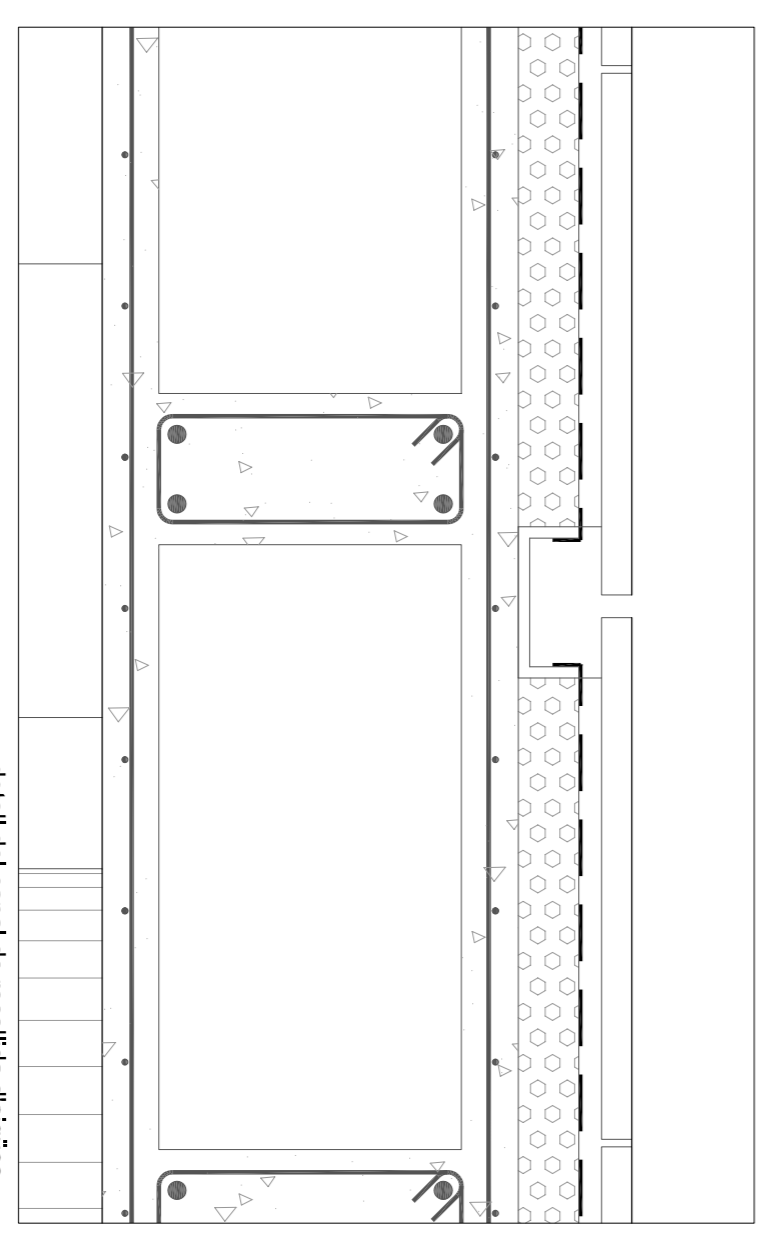
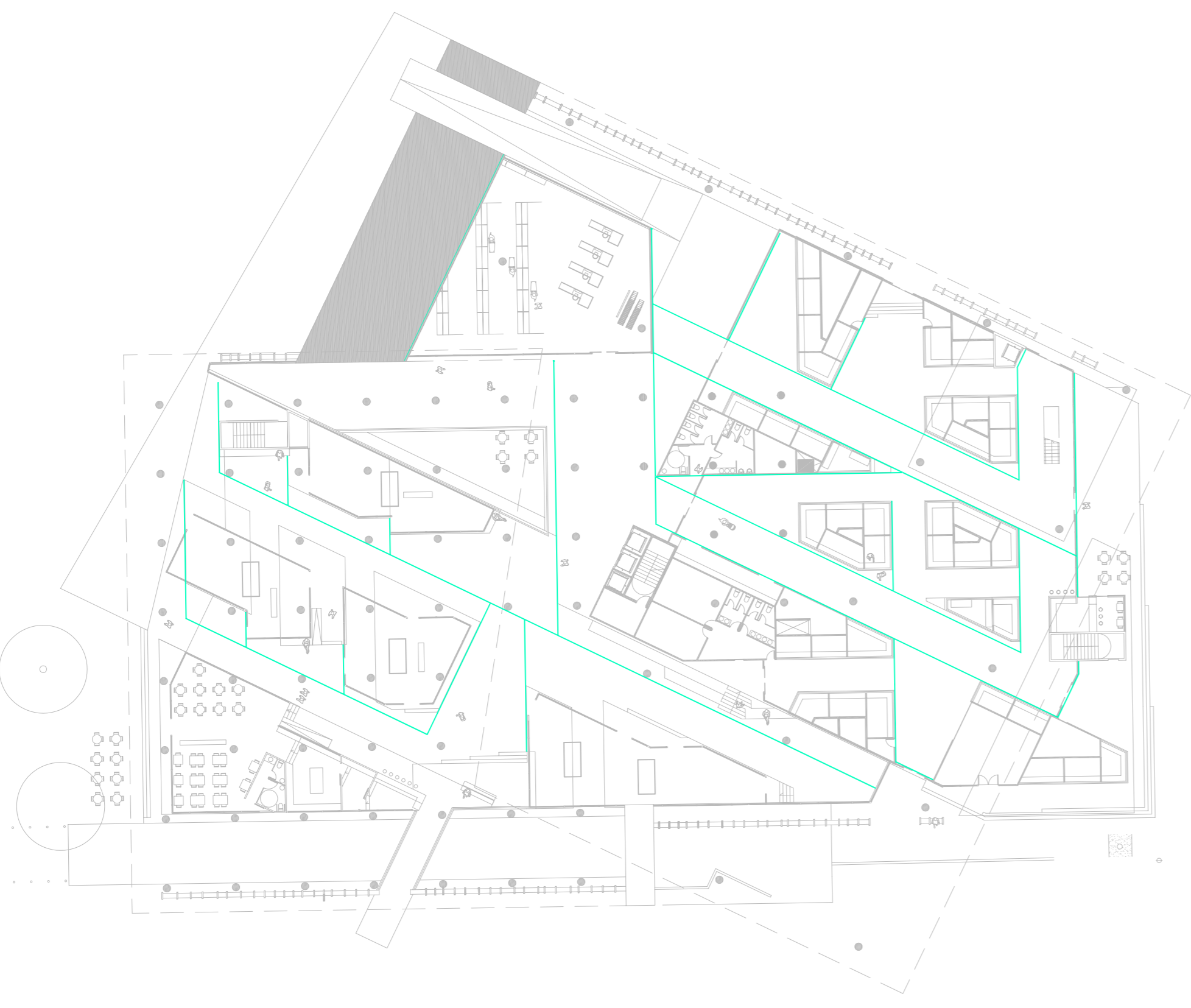
planta aparcament clients

planta accés vivendes



planta magatzems mercat

planta accés mercat



detall del canal de recollida d'aigües  
A1 e:1/10  
A3 e:1/20

A1 e:1/400  
A3 e:1/800