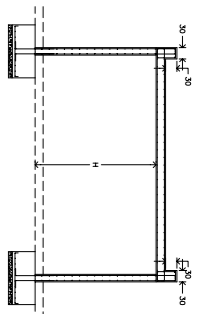
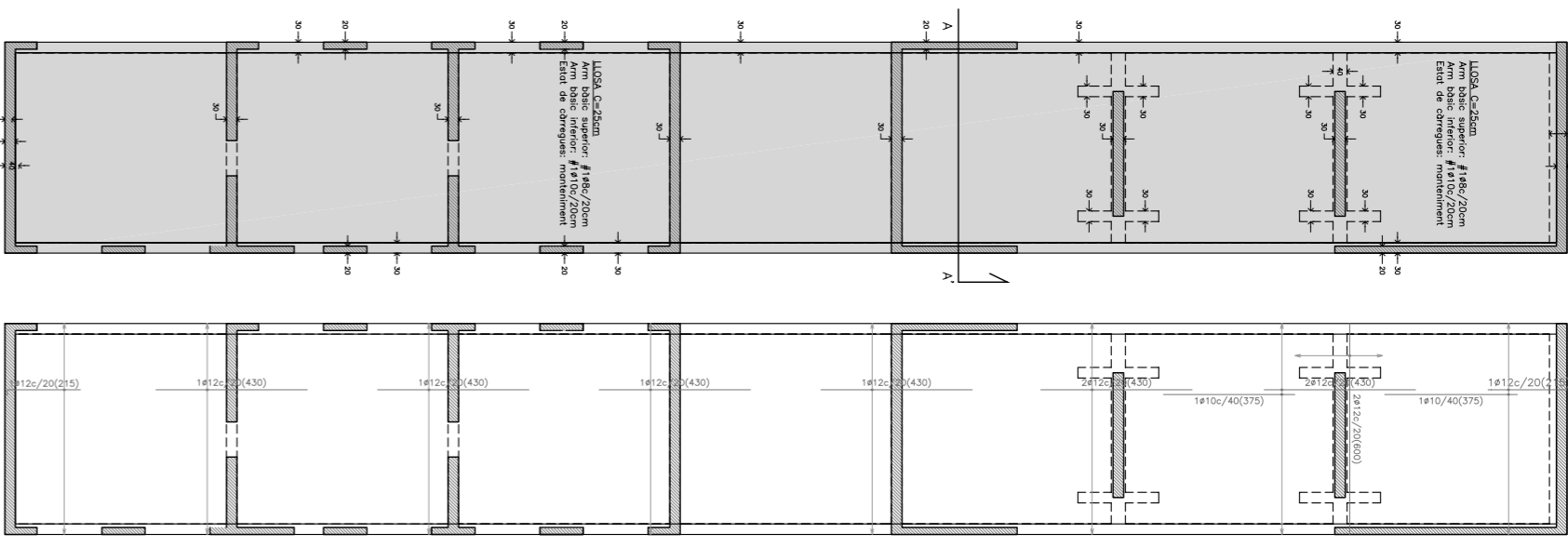
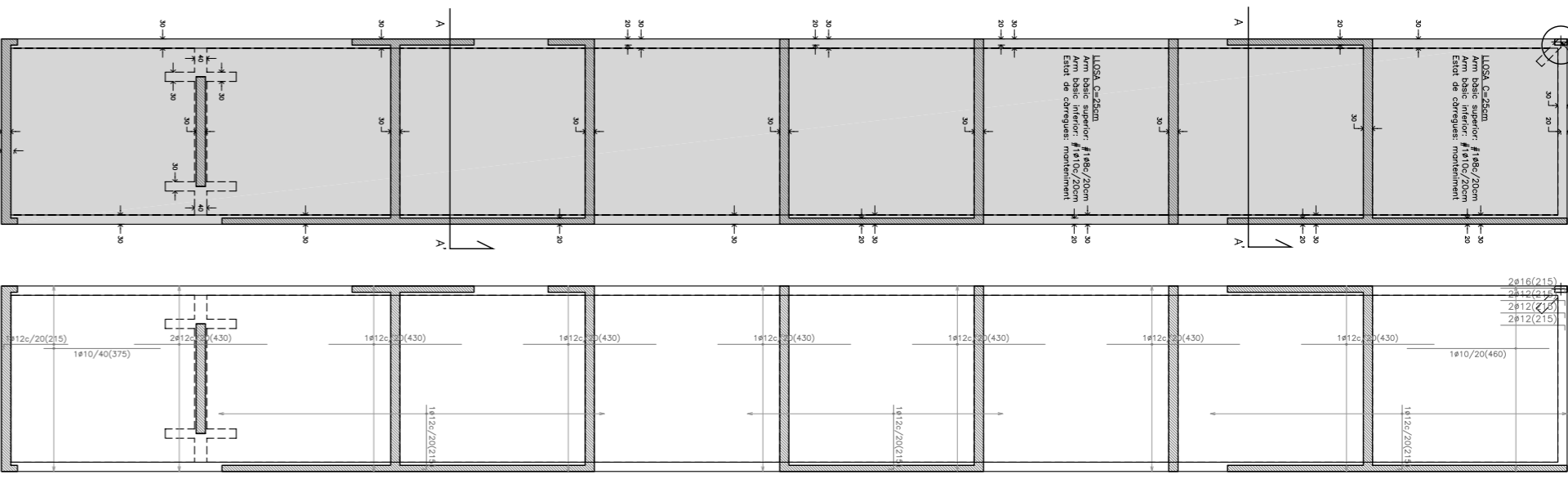


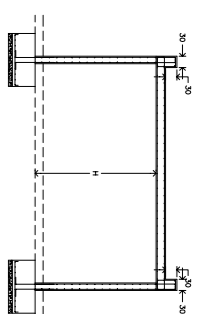
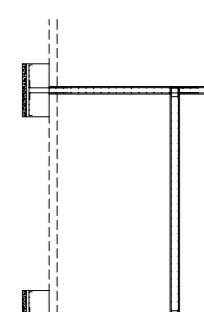
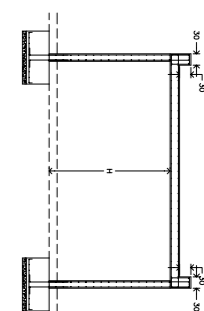
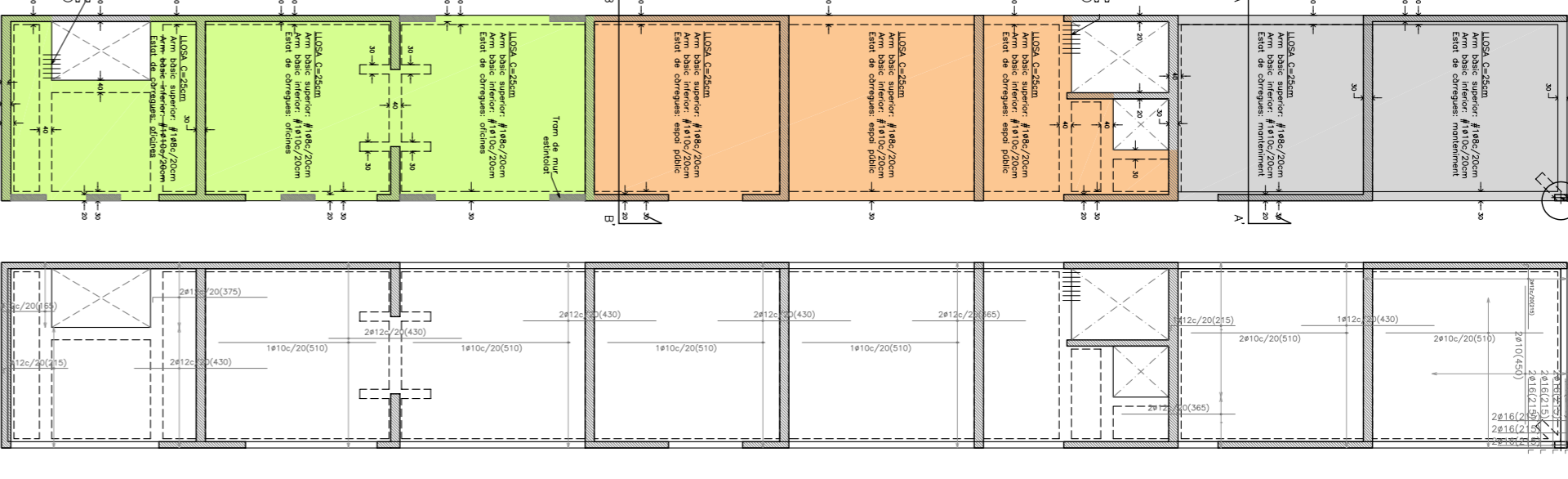
Desplaçament Z (G+D+V)(K=1)



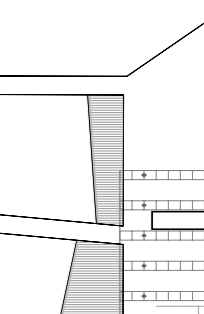
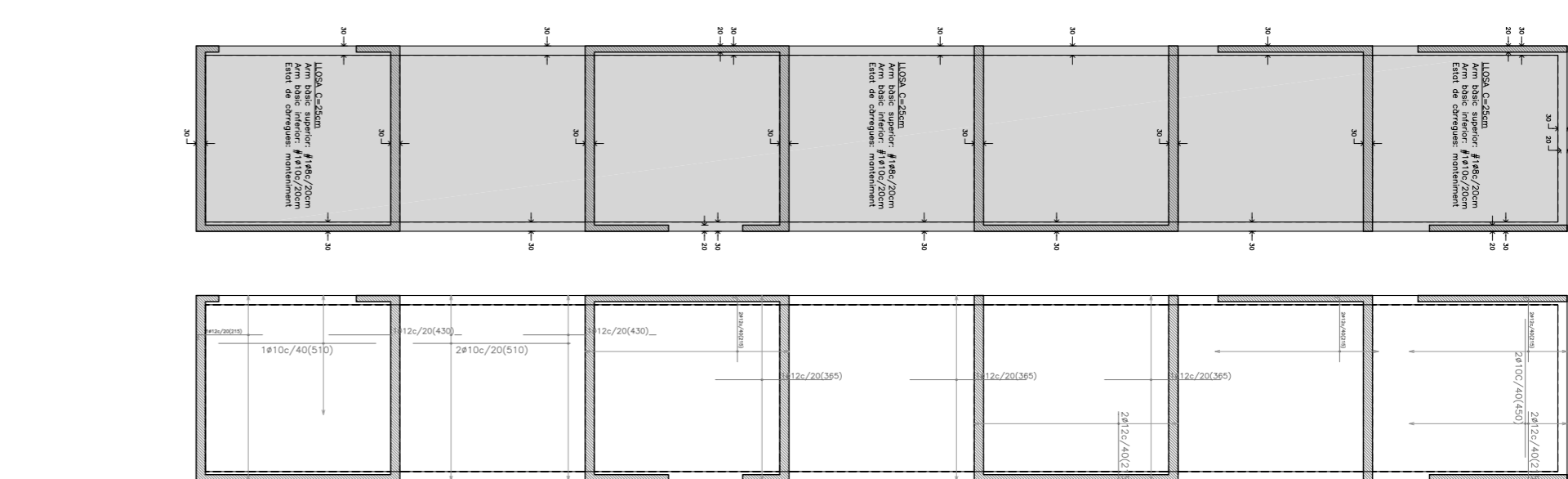
Desplaçament Z (G+D+V)(K=1)



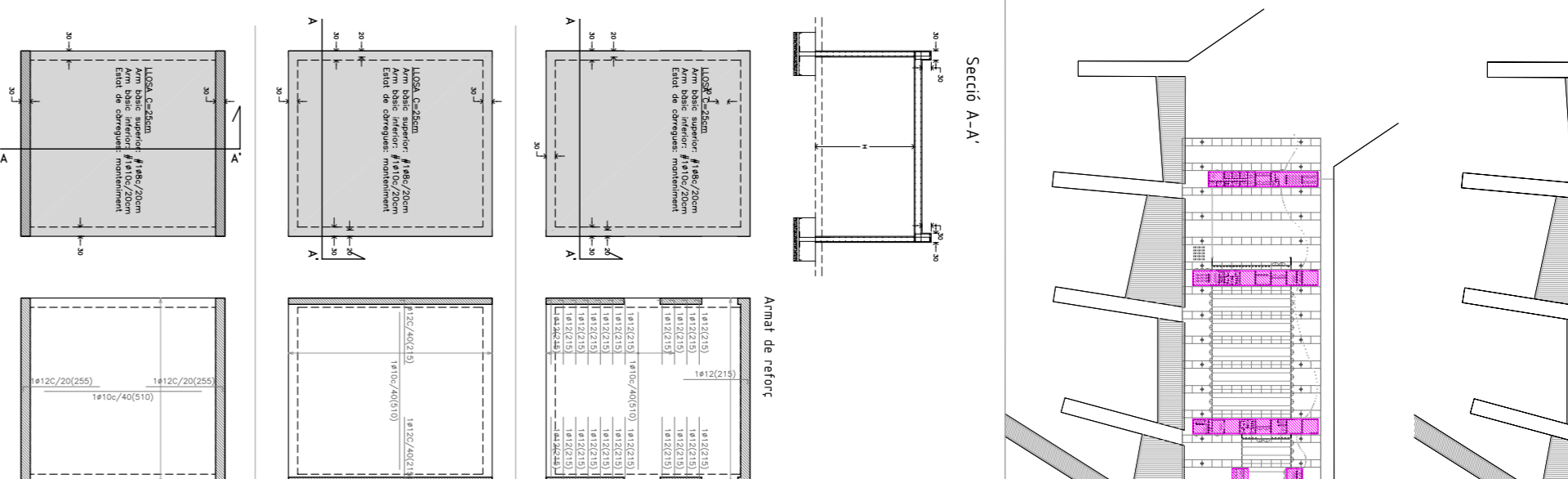
Desplaçament Z (G+D+V)(K=1)



Desplaçament Z (G+D+V)(K=1)



Desplaçament Z (G+D+V)(K=1)



E1/200

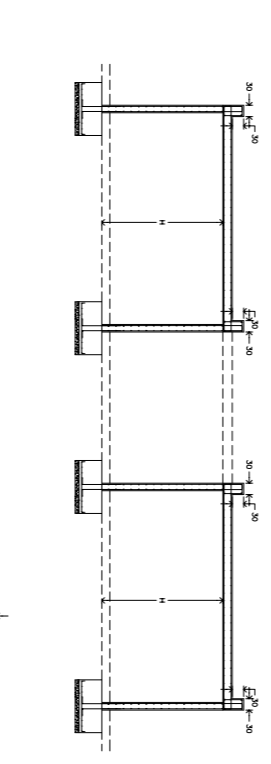
E1/200

E1/200

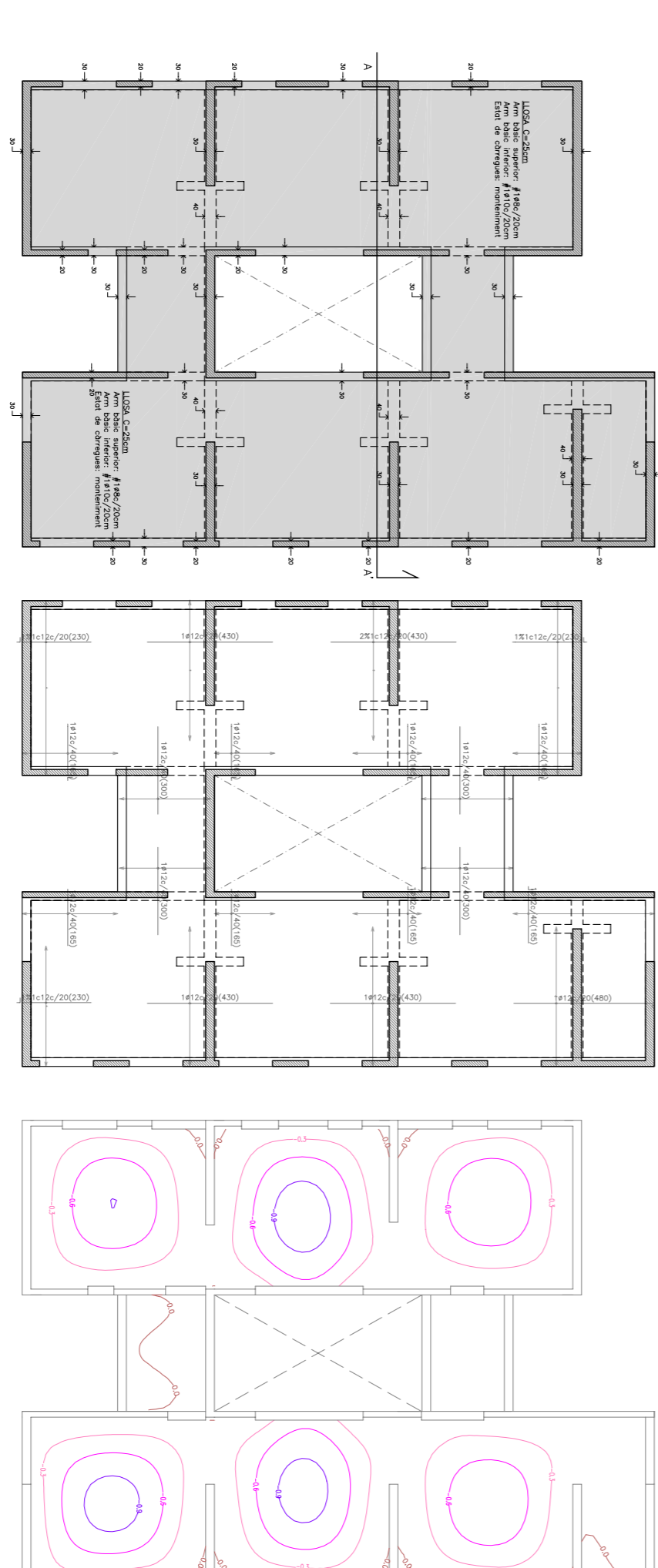
E1/200

E1/200

Secció A-A'

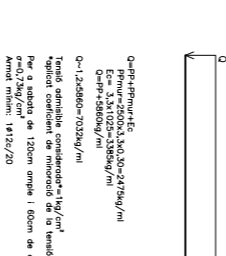


Anell de reforç

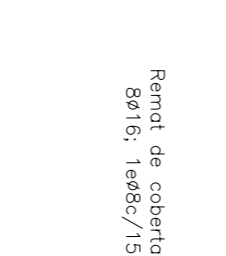


Desplaçament Z (G+D+V)(K=1)

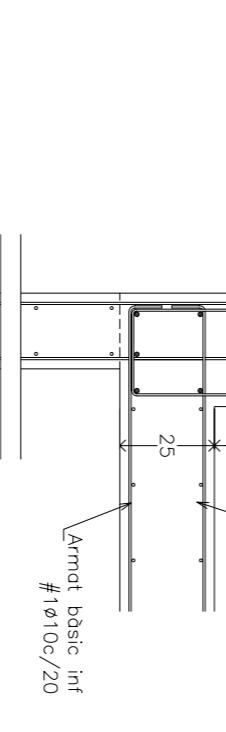
PLANTA FONAMENT A'00



ISOBATS DE NINS ESTUDI



Remunt de coberta



PROPS DE FORMIGÓ

Table with 2 columns: Property (e.g., Resistència característica) and Value (e.g., 21 N/mm²).

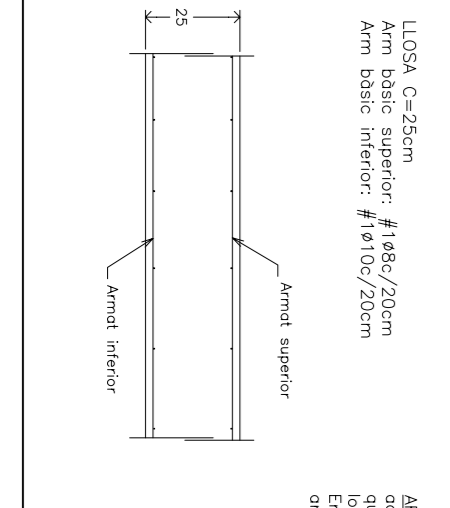
CONTROL EXECUCIÓ

Table with 2 columns: Item (e.g., Classificació) and Value (e.g., 2 (28 dies)).

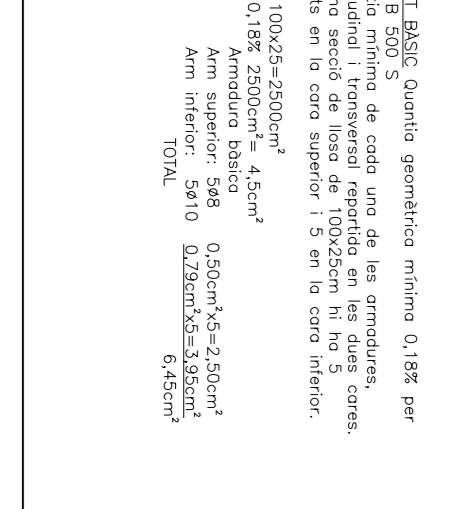
ESTAT DE CÀRREGUES

Table with 2 columns: Category (e.g., LLCSA DE CÀRREGU) and Value (e.g., 200kg/m²).

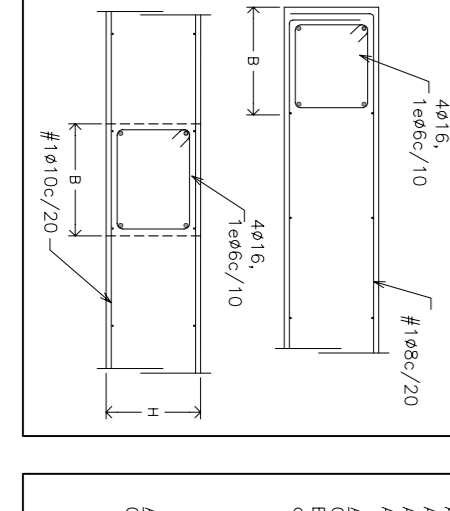
CARACTERÍSTIQUES DE LLCSA



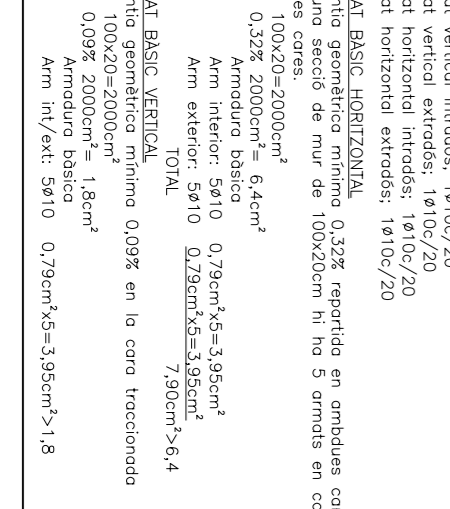
ANELL DE REFORÇ



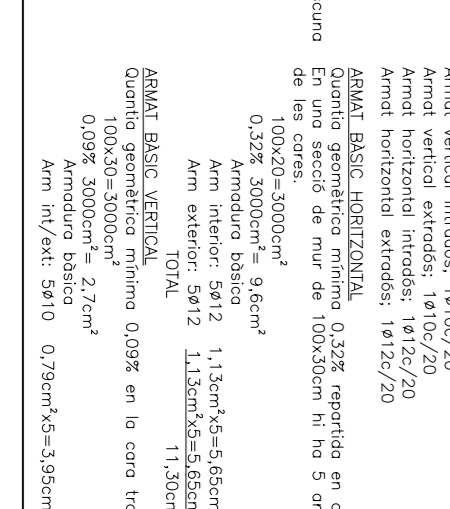
NERS PERIMÈTRICS I INTERIORS



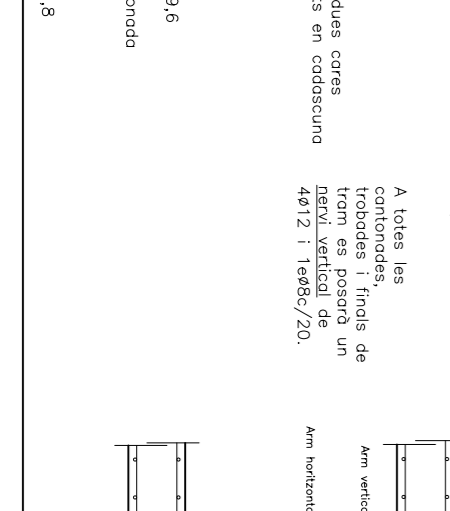
MAR AMPLIACIÓ



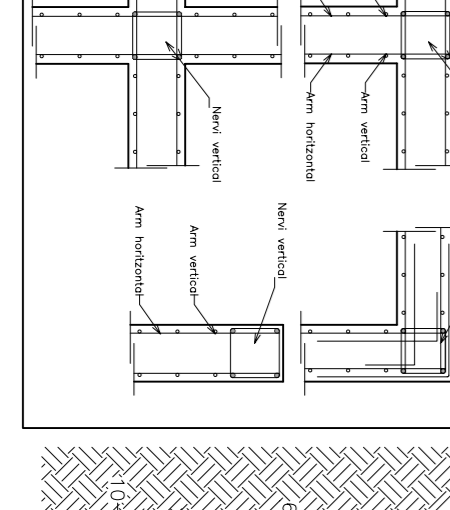
MAR AMPLIACIÓ



TRIBUNES DE NINS ESTUDI



TRIBUNES DE NINS ESTUDI



ISOBATS DE NINS ESTUDI

