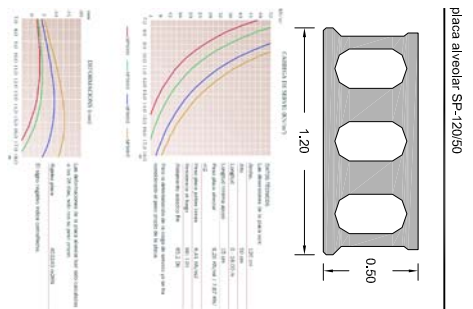
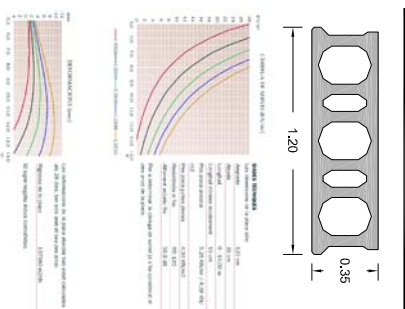
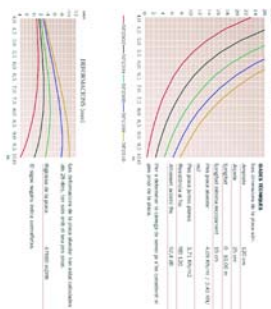
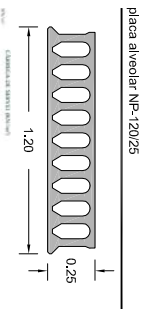
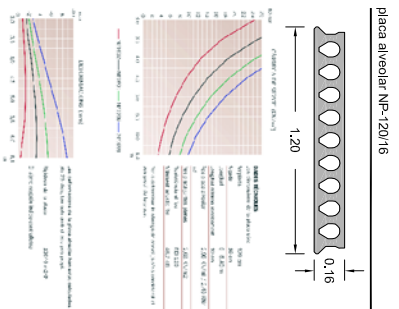
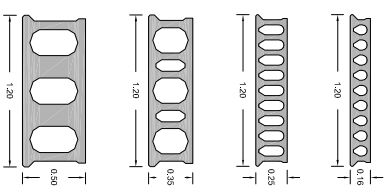


tipus plaques forjats

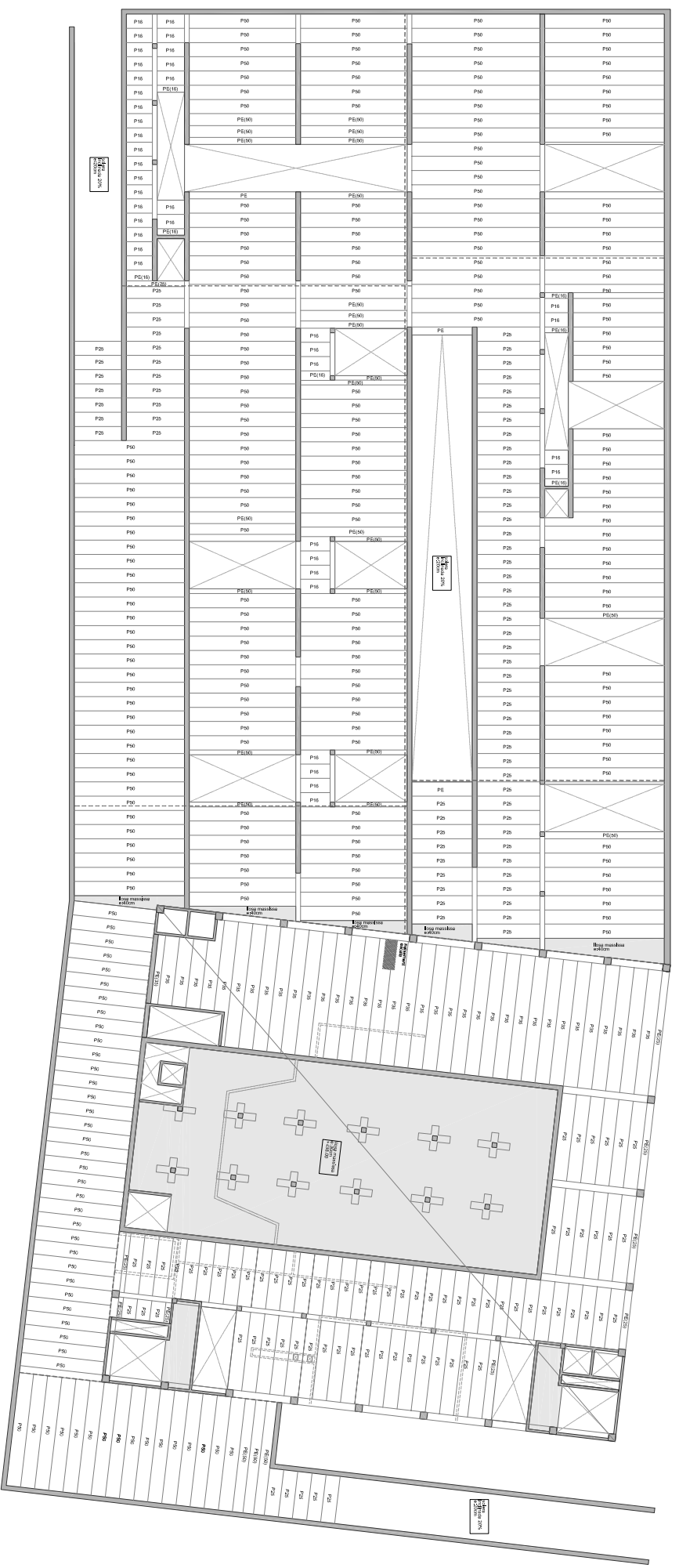
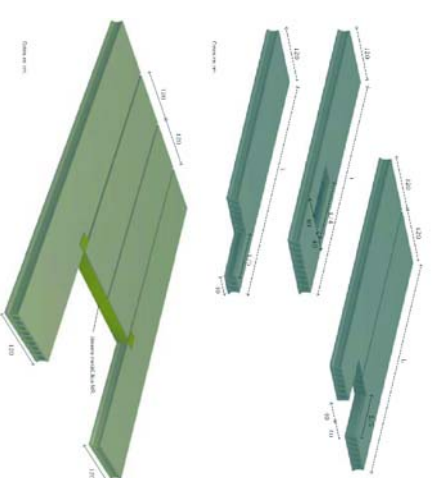


plaques alveolars
predimensionament
cantell plaques alveolars
L = 11,50 m
cantell = 11,50 = 0,38 m
30

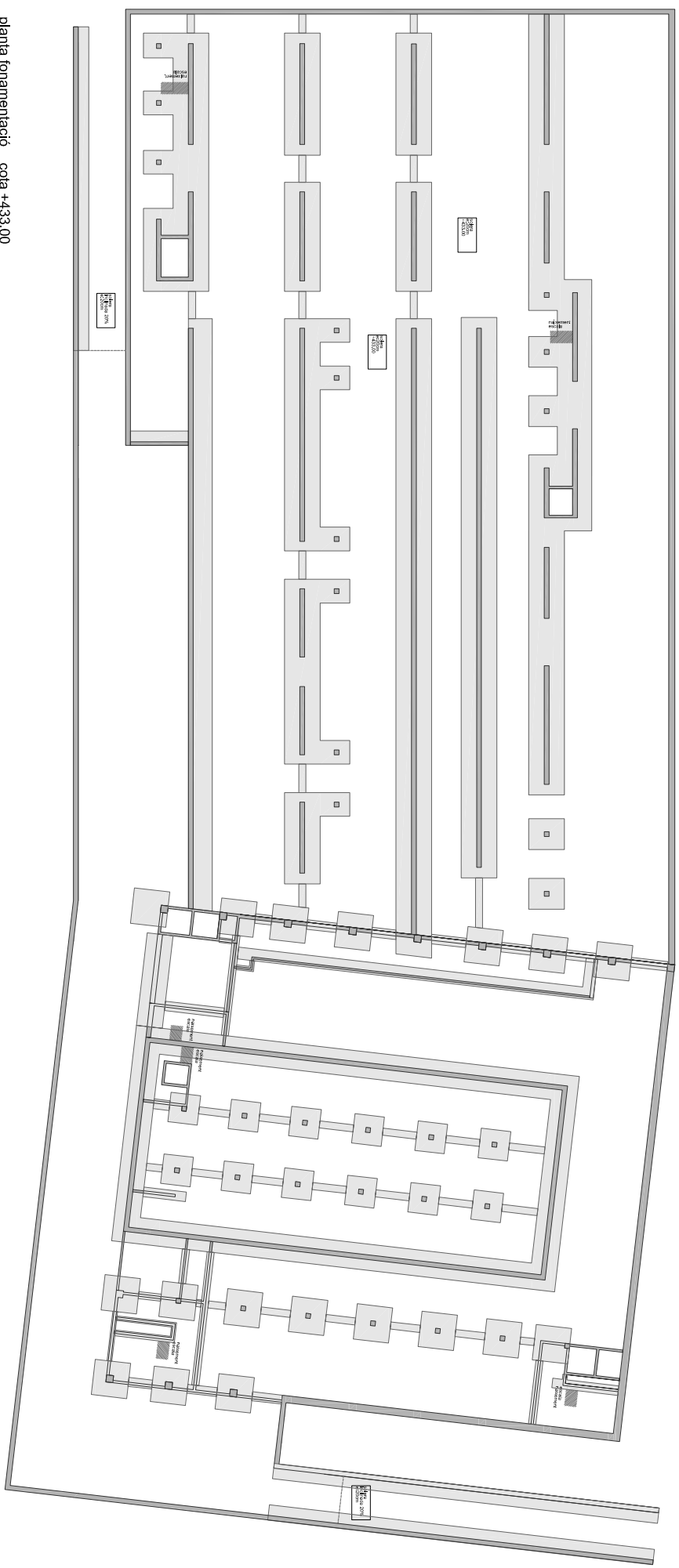
estat de càrregues

pes propi de l'estructura 400,00 kg/m²
pes propi sol·licit de coberta 400,00 kg/m²
sobrecàrrega d'ús 500,00 kg/m²
sobrecàrrega de neu 50,00 kg/m²
sobrecàrrega d'instal·lacions 10,00 kg/m²
cambió bombers 2000,00 kg/m²

3360,00 kg/m²



forjat +438,00



planta fonamentació cota +433,00

