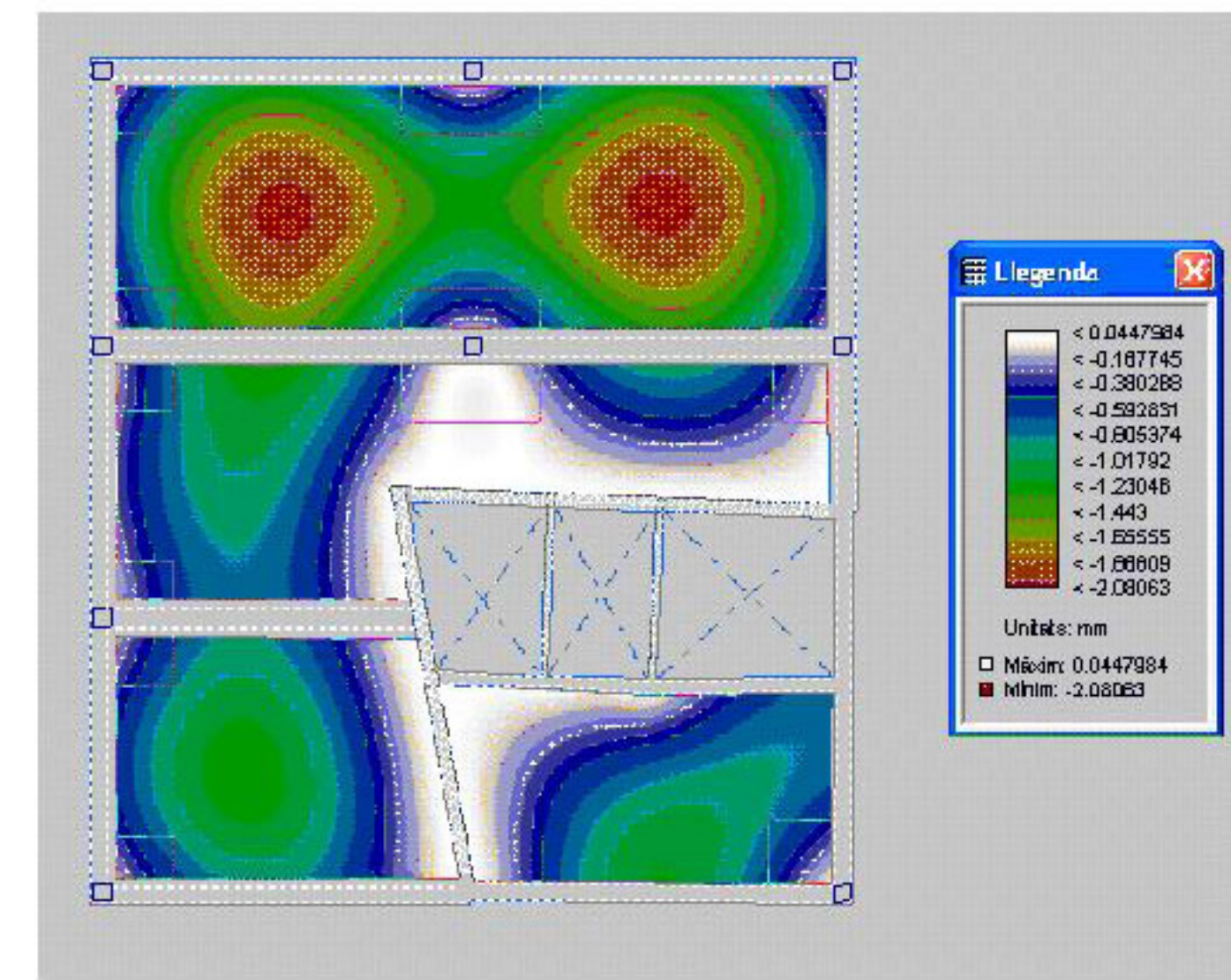
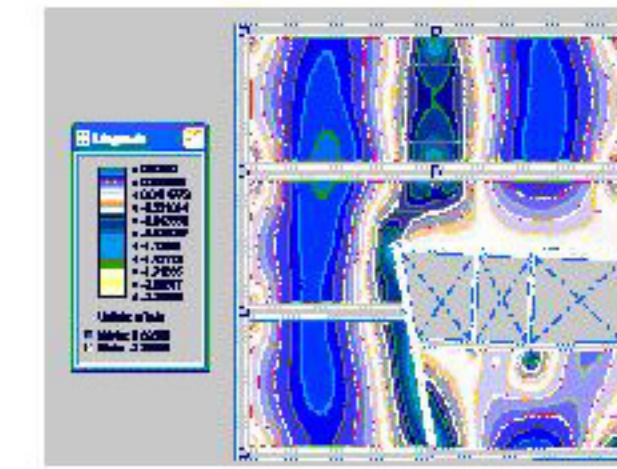


Armadura superior Formigó HA-25 Acer B 500 S
 Armadura base en àbacs (per quadrícula) 2Ø10 (no detallada en plànol)

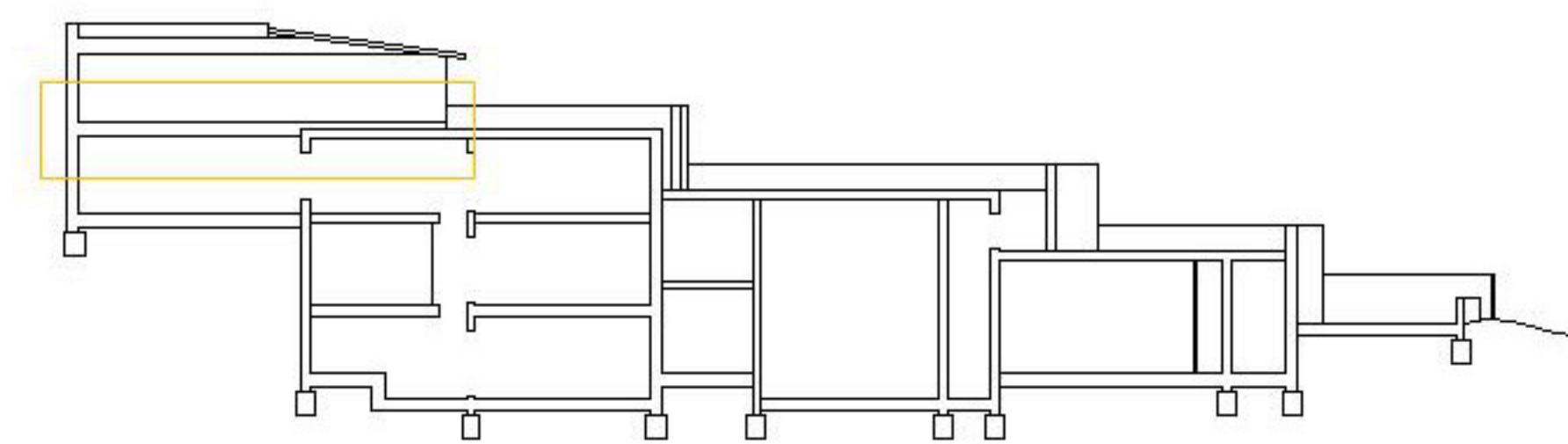
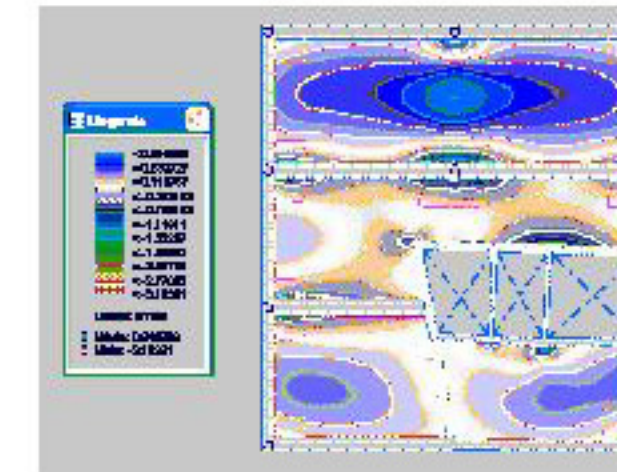
DESPLAÇAMENTS EN Z



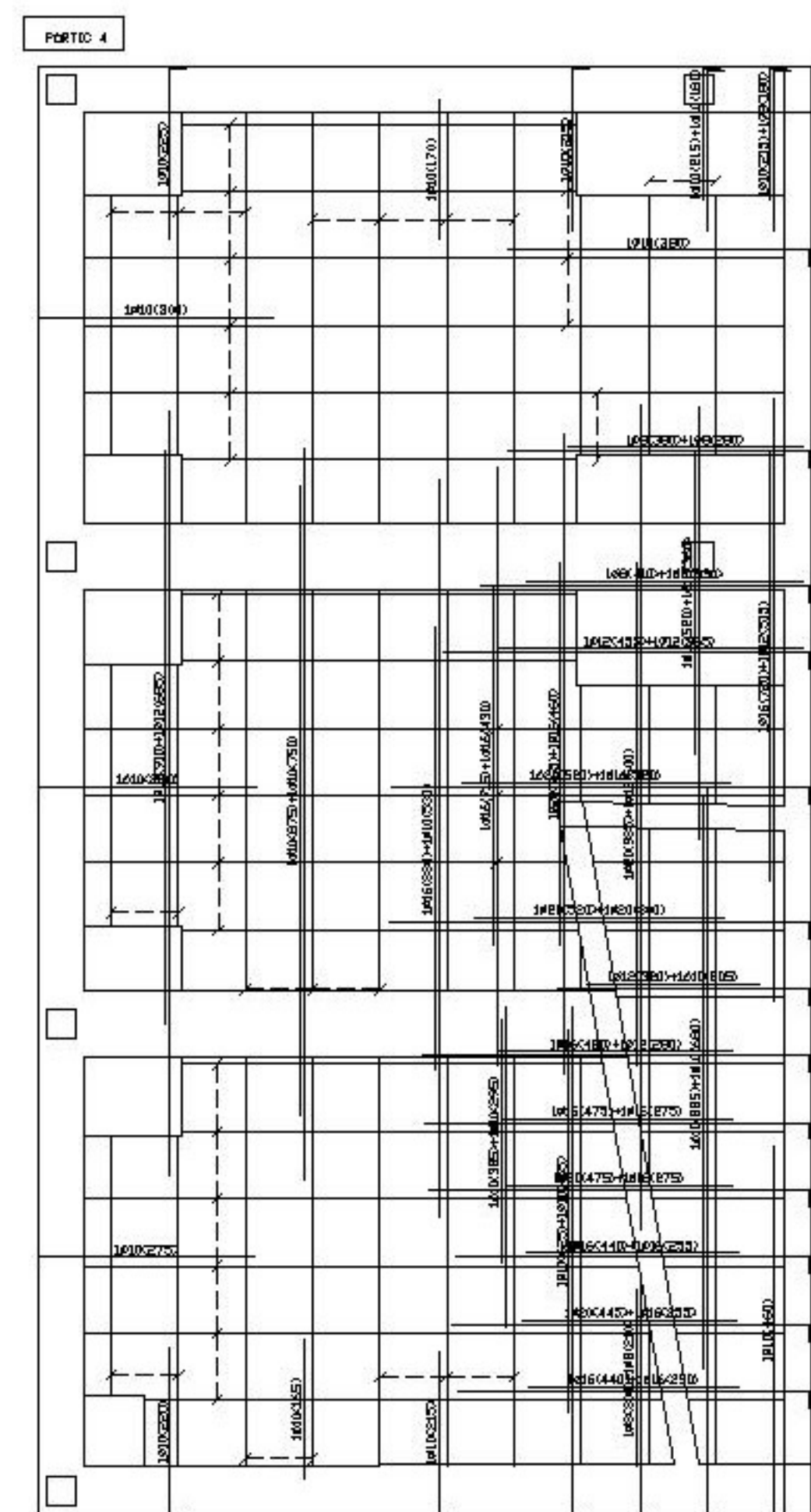
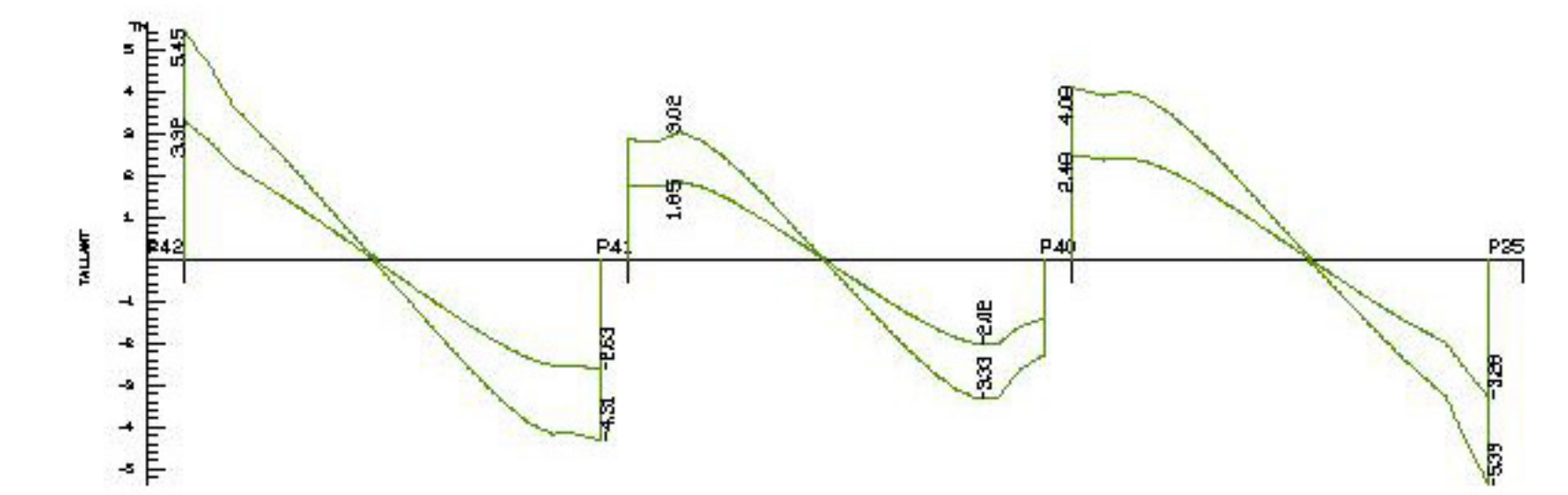
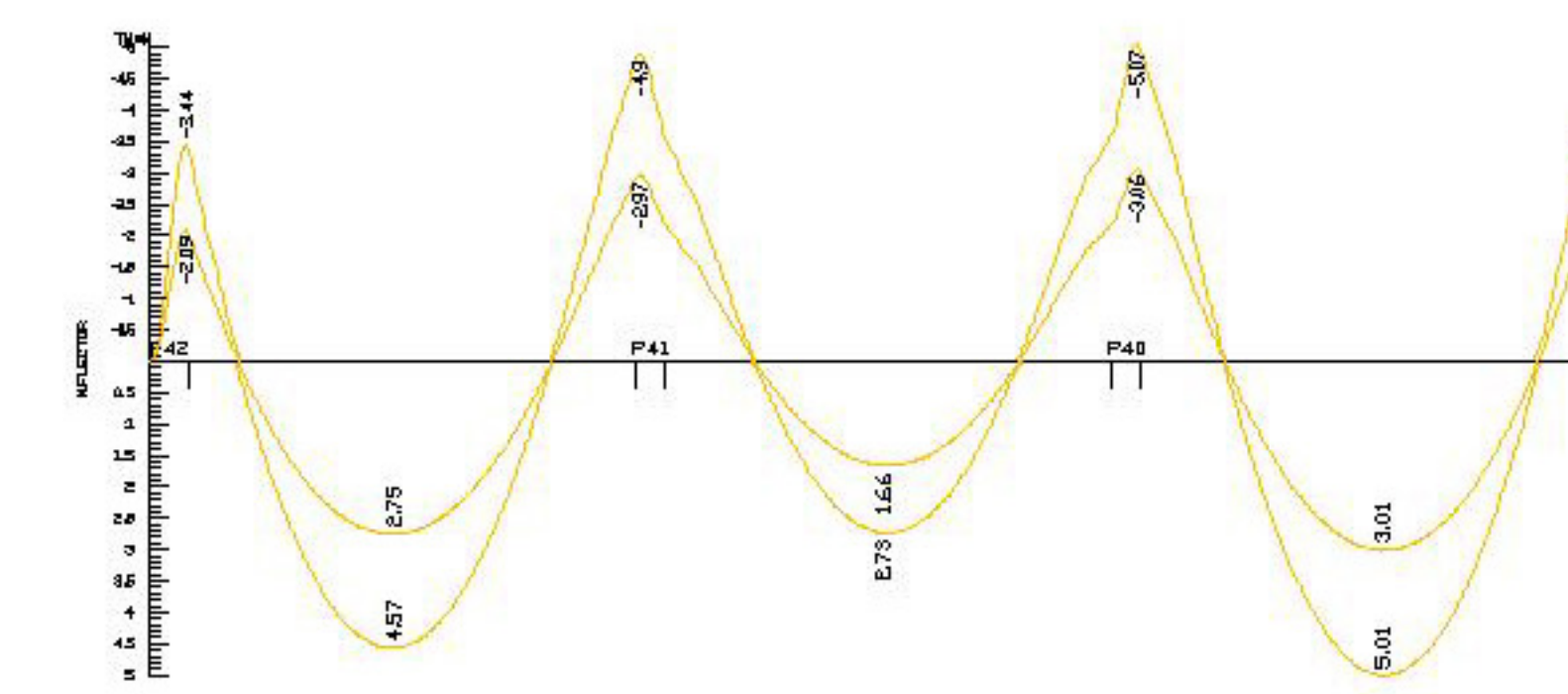
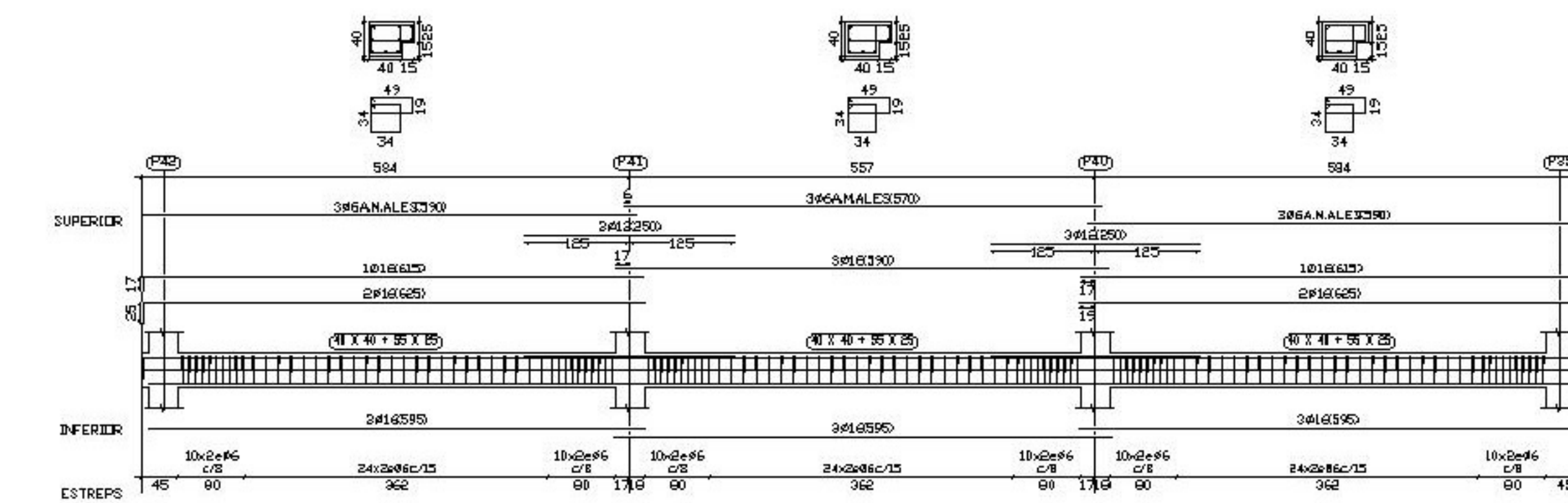
MOMENTS EN X



MOMENTS EN Y

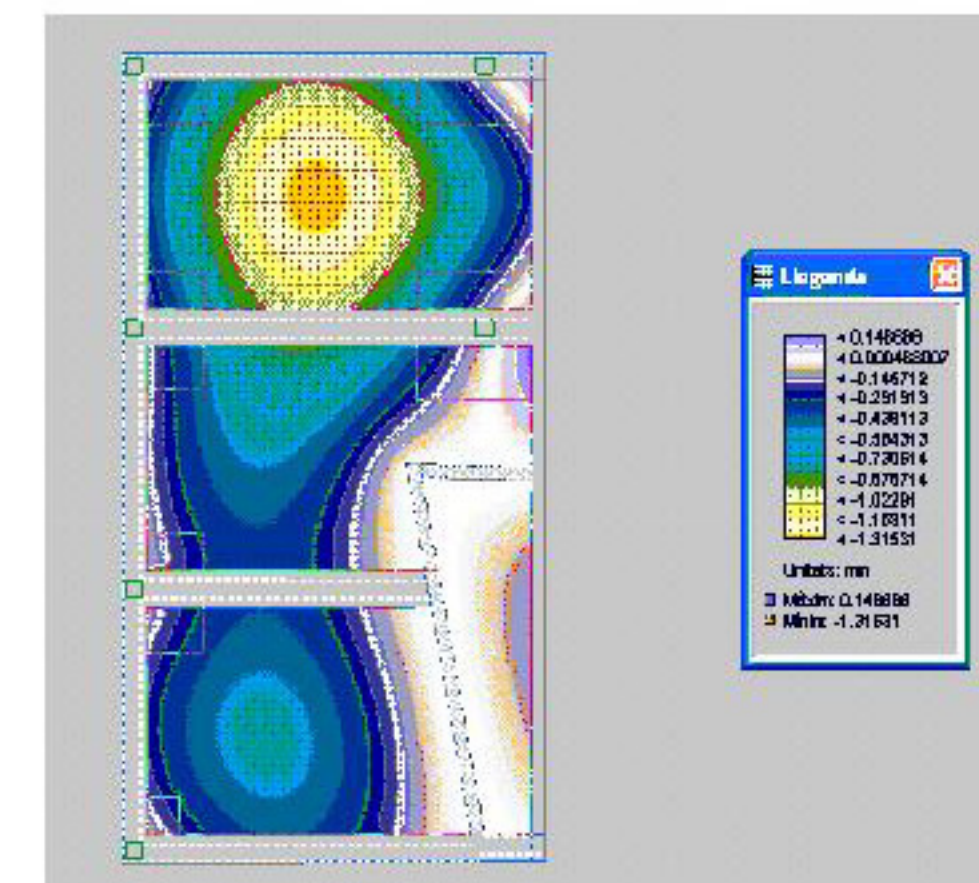


PÒRTIC 6

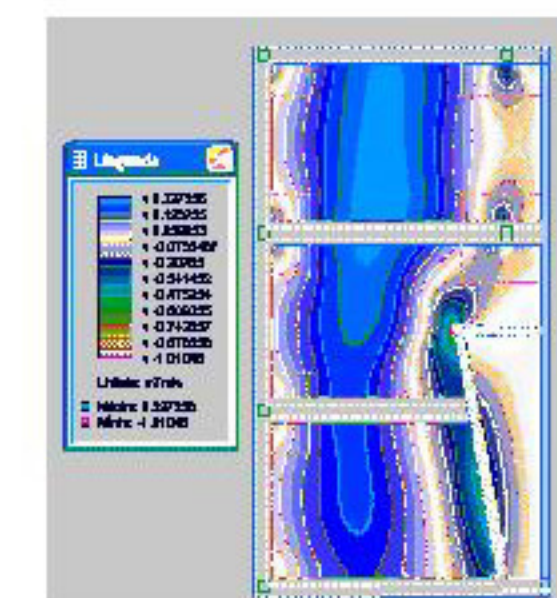


Armadura superior Formigó HA-25 Acer B 500 S
 Armadura base en àbacs (per quadrícula) 2Ø10 (no detallada en plànol)

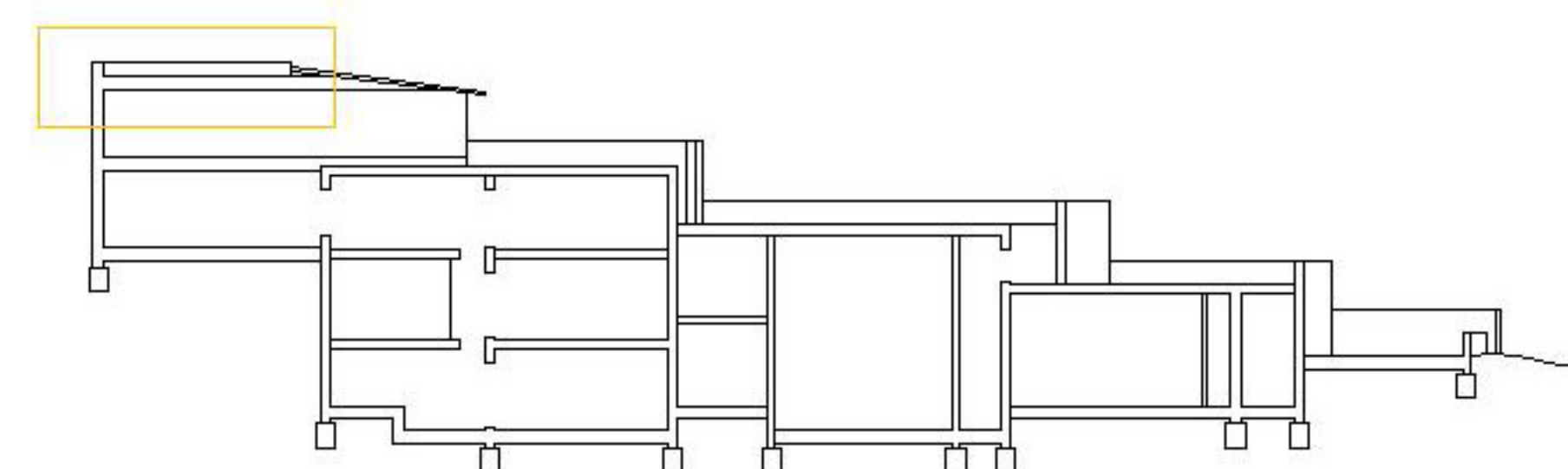
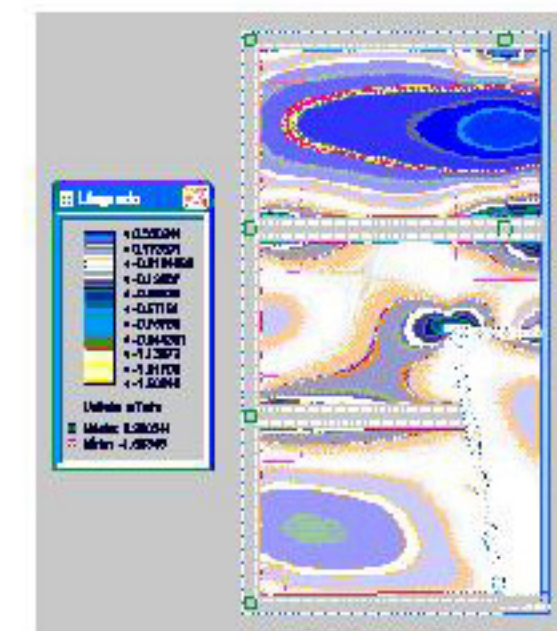
DESPLAÇAMENTS EN Z



MOMENTS EN X



MOMENTS EN Y



PÒRTIC 4

