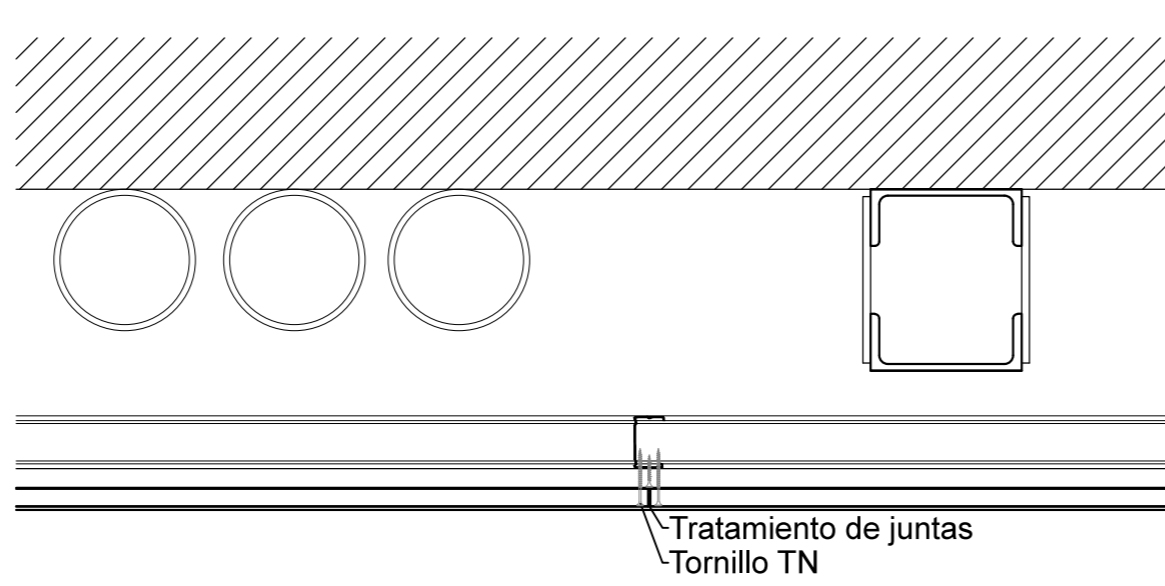


PARAMENTOS VERTICALES

PV 1

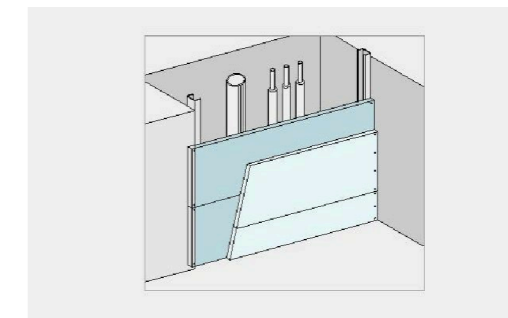
trasdós de la fachada:
 SISTEMA AUTOPORTANTE KNAUF EI 120'



FACHADA ORIGINAL

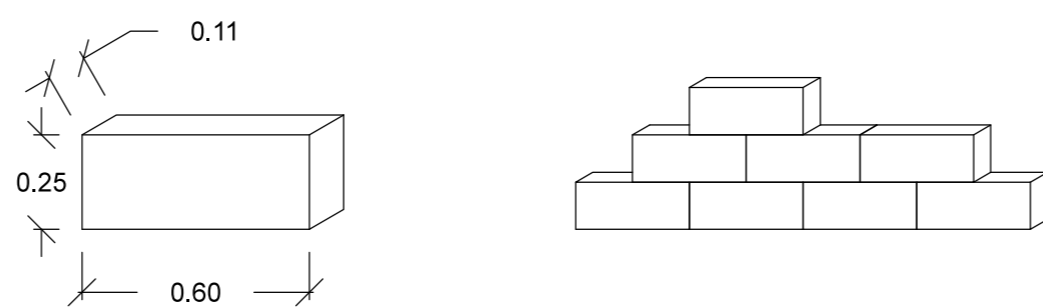
cámara para paso e estructura e instalaciones

perfilería: montantes en C y canales en U
 Placas Knauf Fireboard (A1) (2 x 25mm)



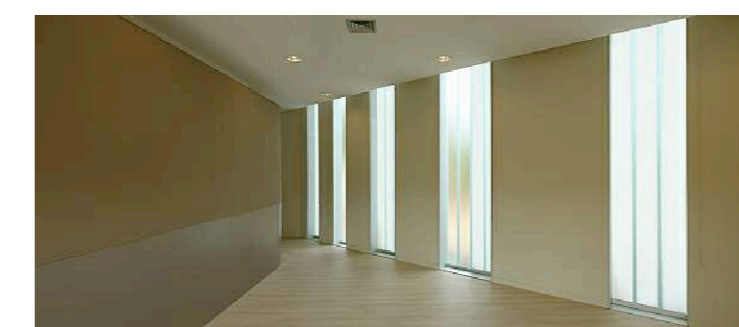
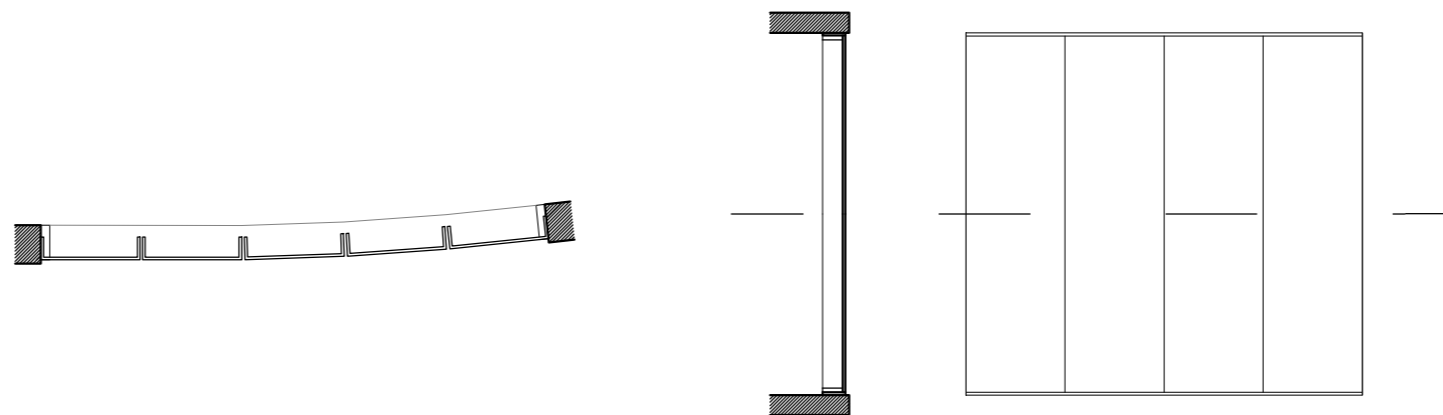
PV 2

muros autoportantes de bloque:
 SIPOREX



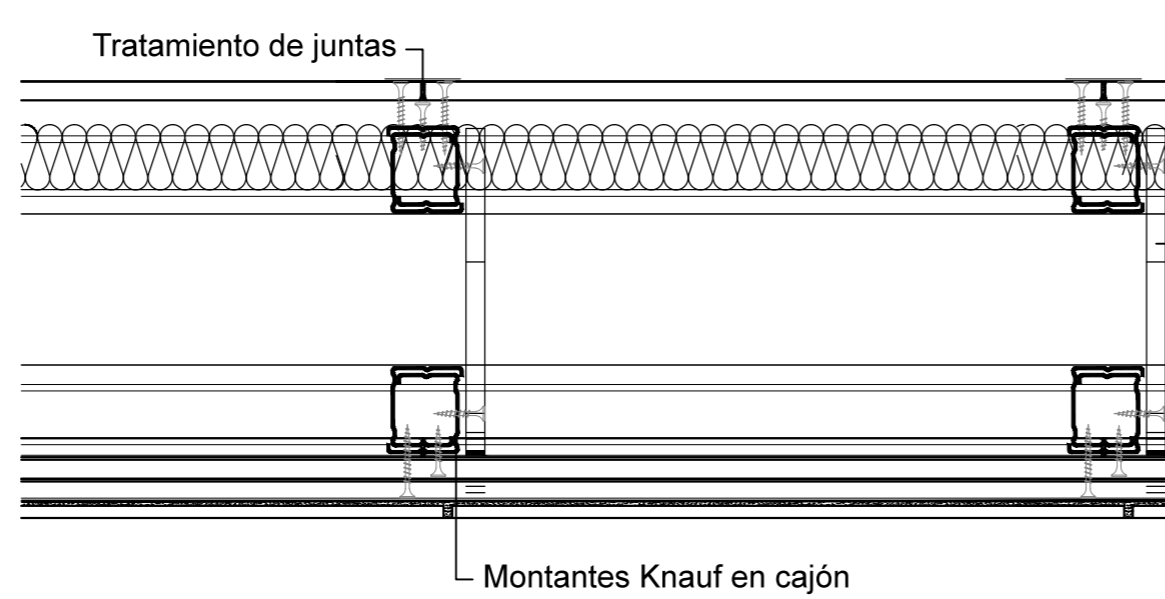
PV 3

muros autoportantes de vidrio
 traslucido:
 U - GLASS



PV 4

tabique técnico:
 KNAUF W336



Placas Knauf (2 x 25mm)

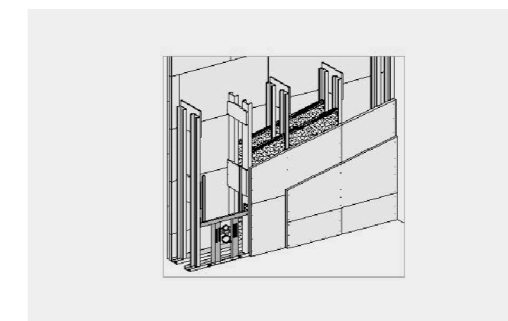
aislamiento térmico, lana mineral e: 80 mm

cartela de placa e \geq 12,5 mm, h= 300 mm, cada 900 mm
 cámara para paso de instalaciones A: 200 mm

perfilería: montantes en C y canales en U

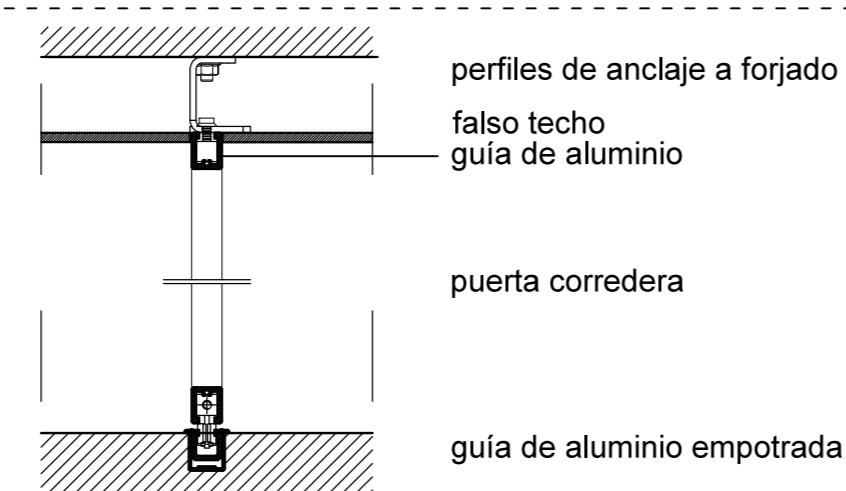
Placas Knauf (2 x 25mm)

Acabado (interior servicios): mortero y placas cerámicas



M 1

puerta corredera:
 ORCHIDEA



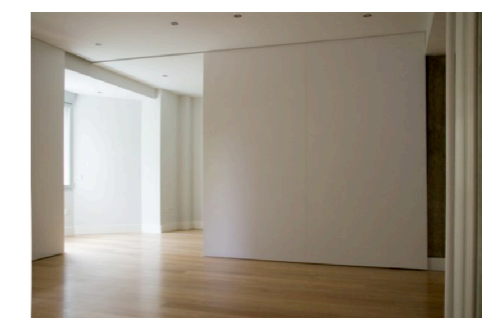
perfiles de anclaje a forjado

falso techo

guía de aluminio

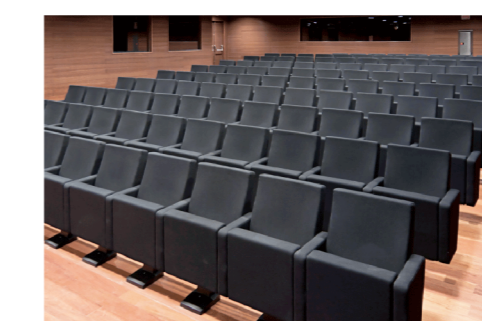
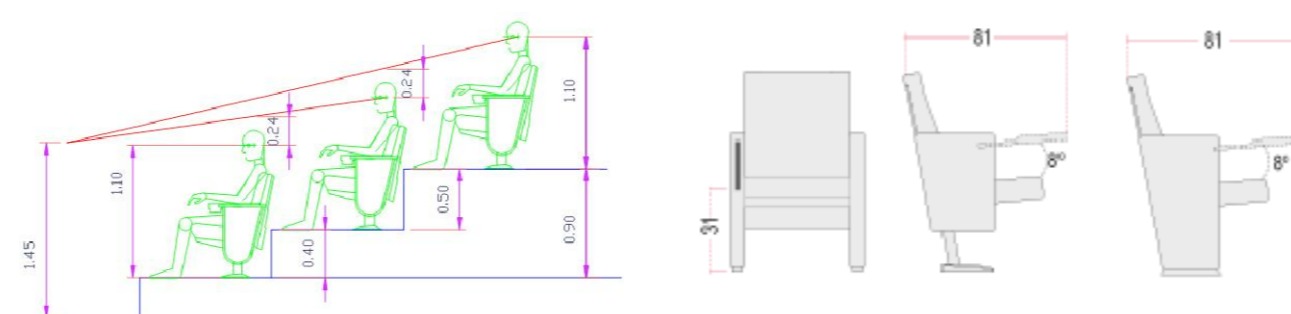
puerta corredera

guía de aluminio empotrada



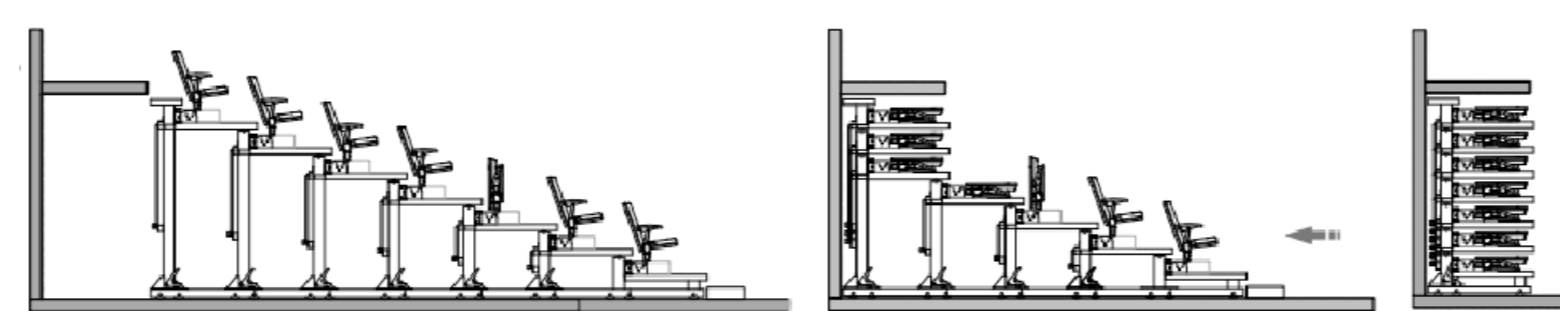
M 2

butacas fijas:



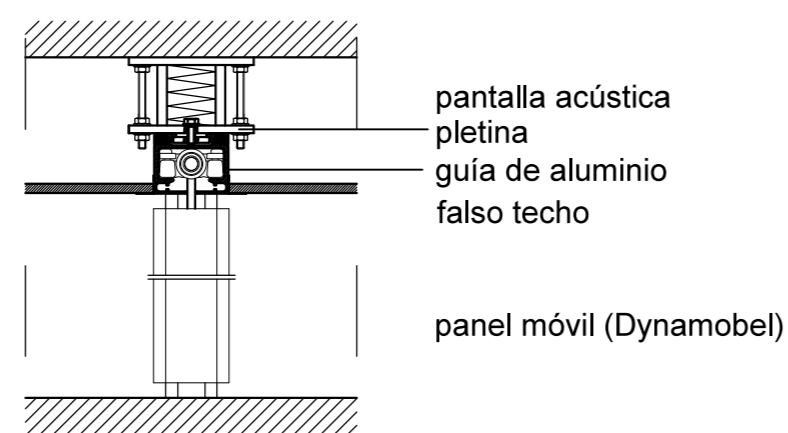
M 3

gradas retráctiles:
 FIGUERAS



M 4

tabique móvil:
 DYNAMOBEL



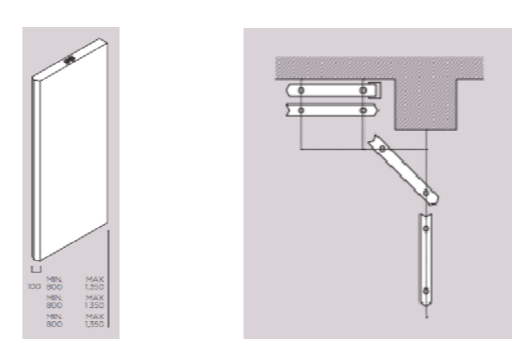
pantalla acústica

pletina

guía de aluminio

falso techo

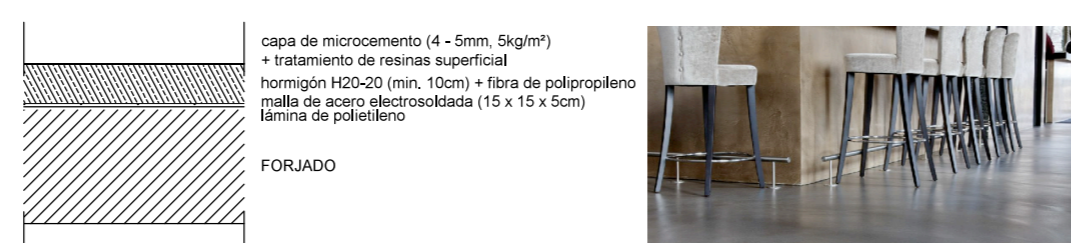
panel móvil (Dynamobel)



PAVIMENTOS

PA 1

pavimento continuo: MICROCEMENTO



capa de microcemento (4 - 5mm, 5kg/m²)

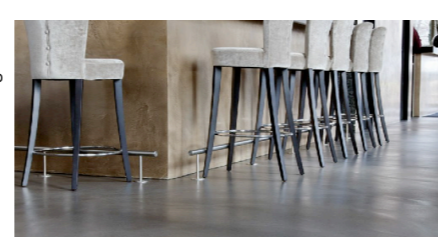
+ tratamiento de resinas superficial

hormigón H20-20 (mín. 10cm) + fibra de polipropileno

mallado de acero electrosoldada (15 x 15 x 5cm)

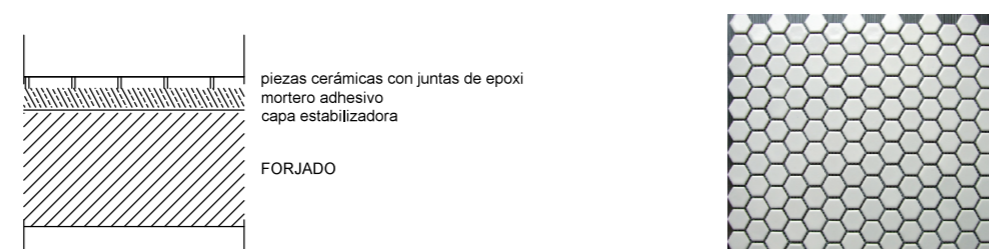
laminado de polietileno

FORJADO



PA 2

pavimento cerámico:

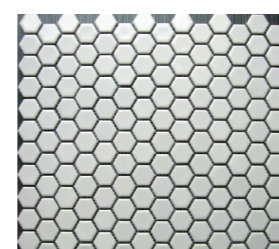


piezas cerámicas con juntas de epoxi

mortero adhesivo

capa estabilizadora

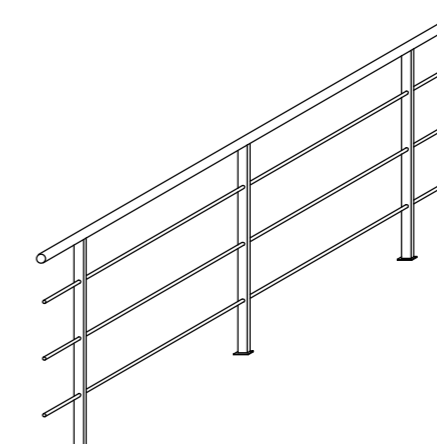
FORJADO



BARANDILLAS

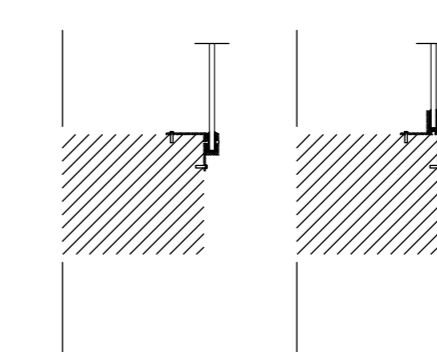
B 1

barandilla metálica:



B 2

barandilla transparente
 y liviana de vidrio:



Vidrio templado e: 14 mm

canal metálico con junta elástica

angular acrombolado al forjado

FORJADO

