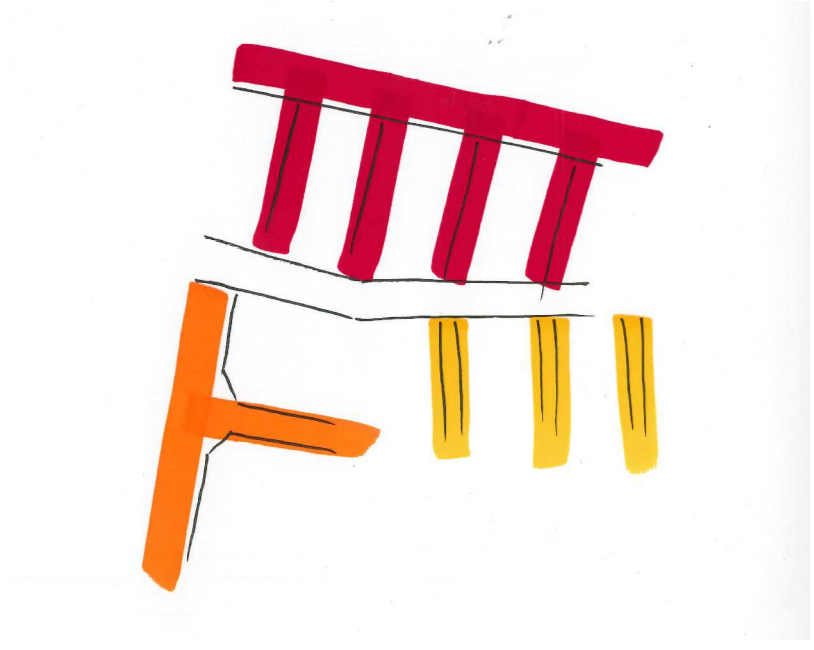
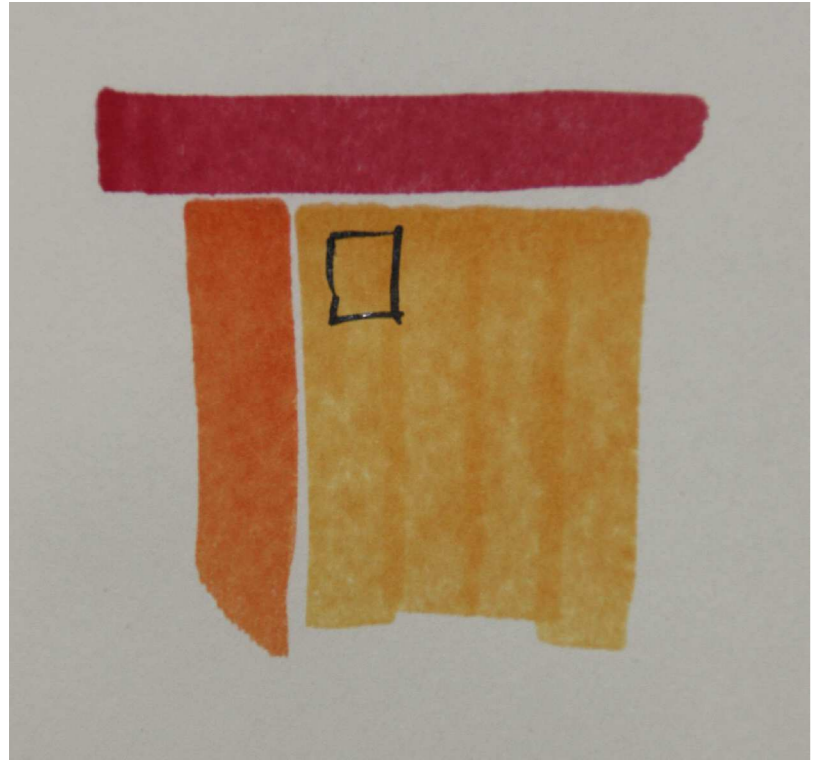
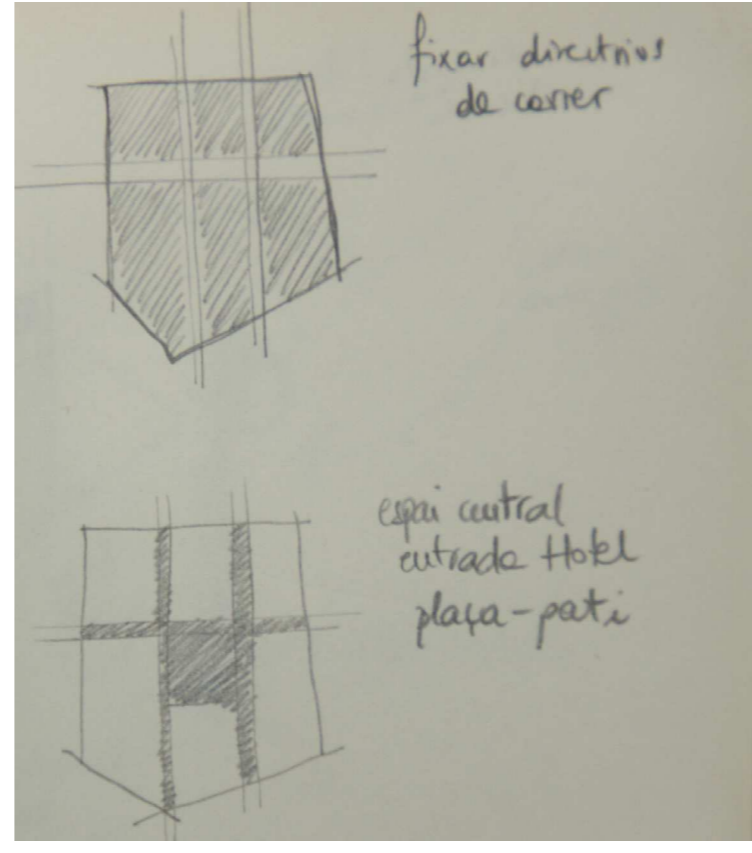
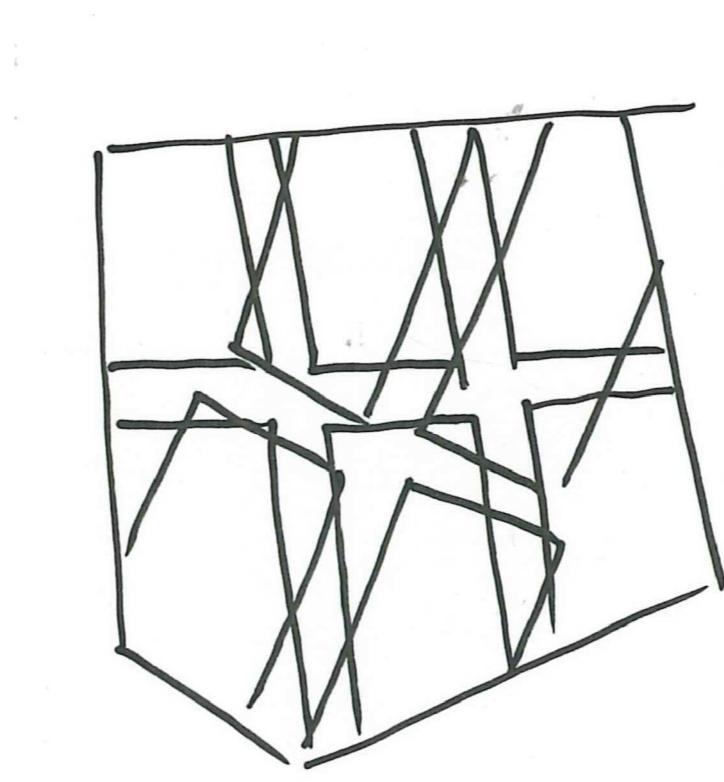
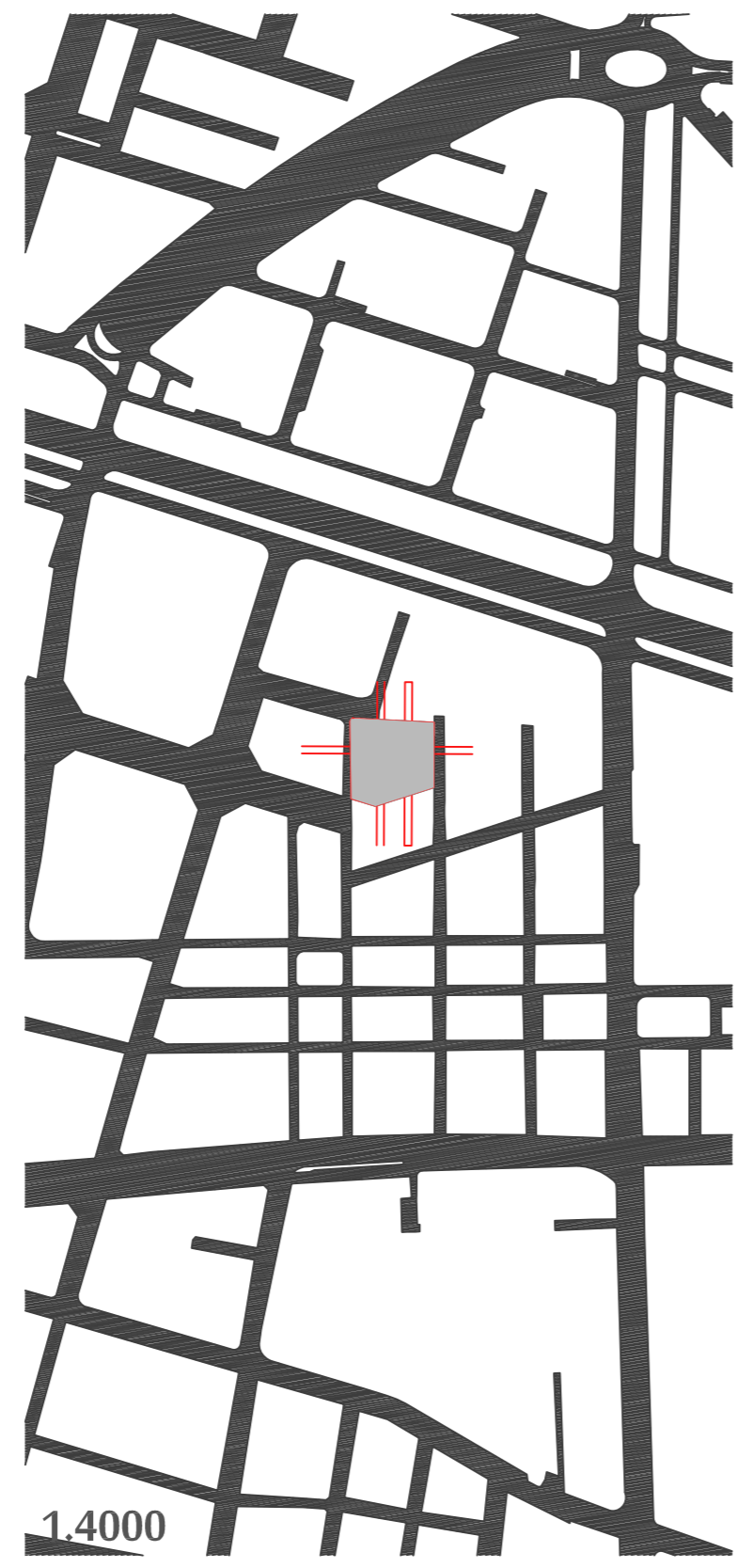


SITUACIÓ



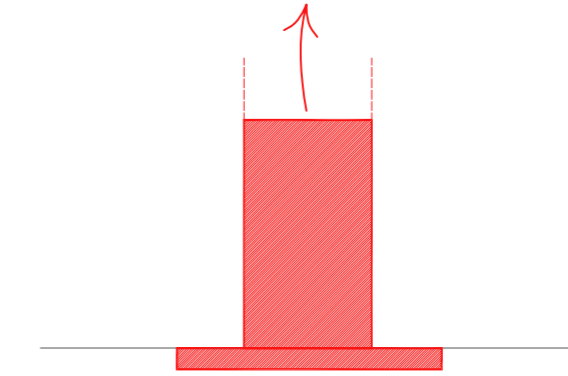
CREAR TRAMA URBANA



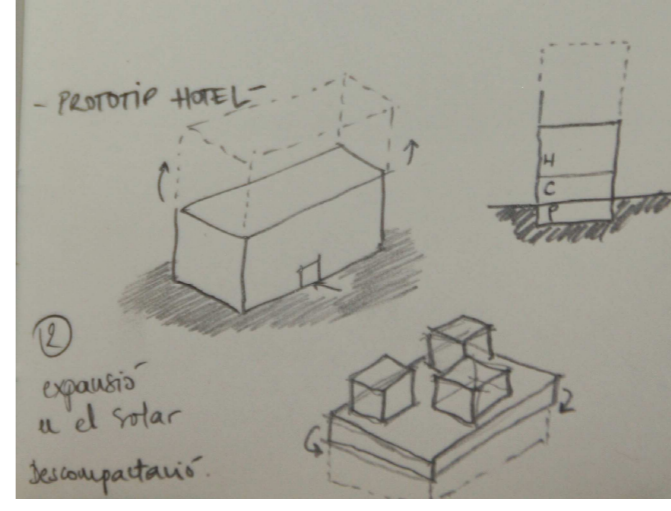
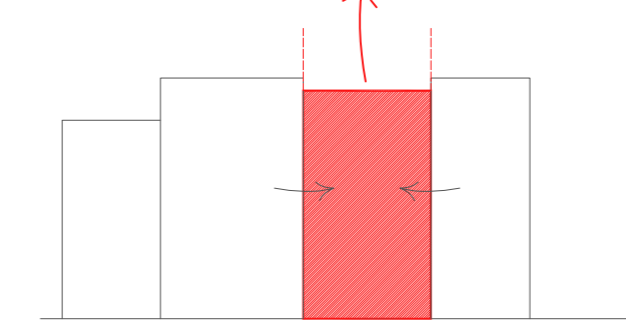
TIPOLOGIES ESTÀNDARDS D'HOTEL

CIUTAT

Edificis en alçada

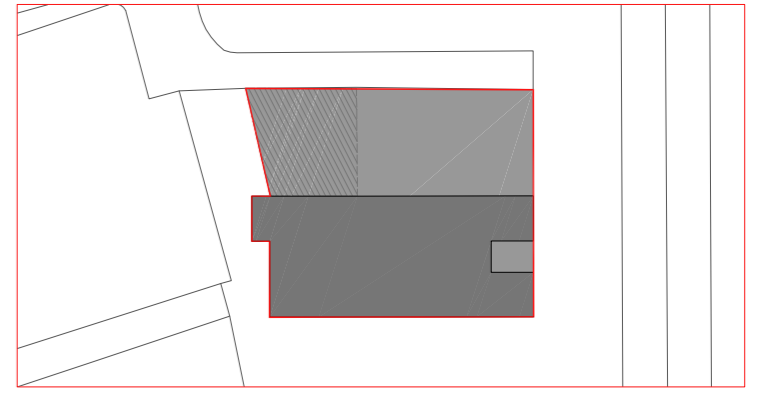
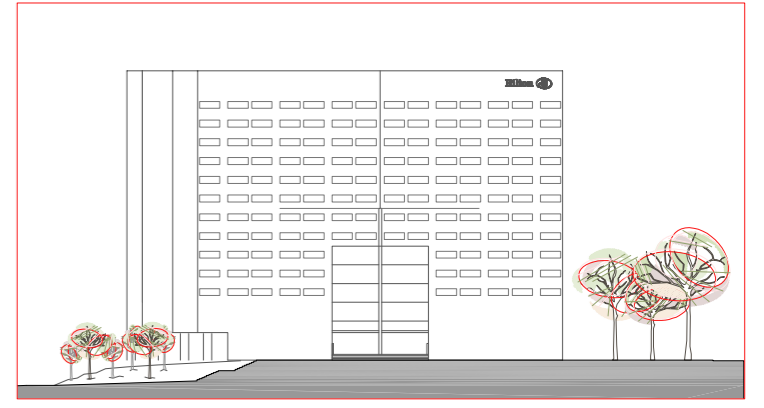


Edificis entre mitgeres

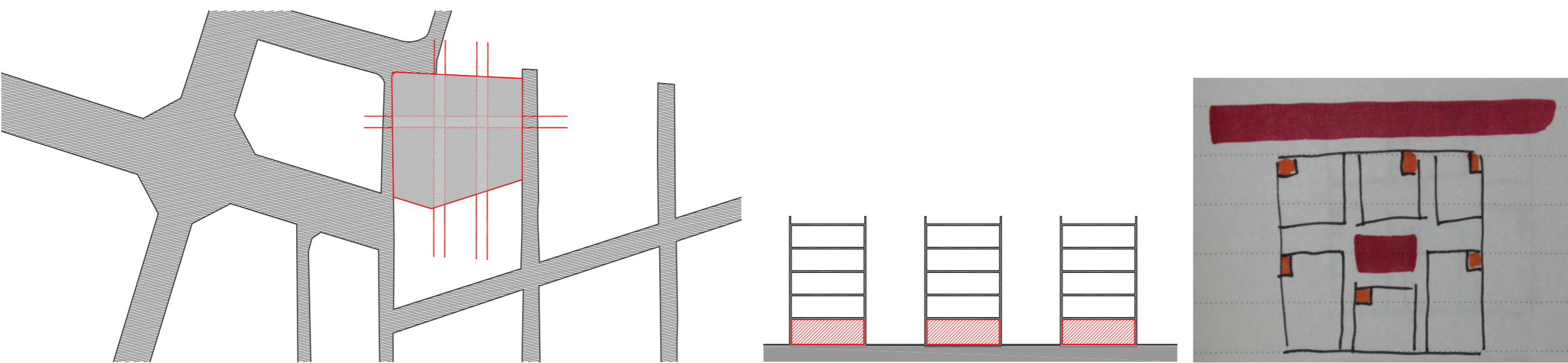


HILTON

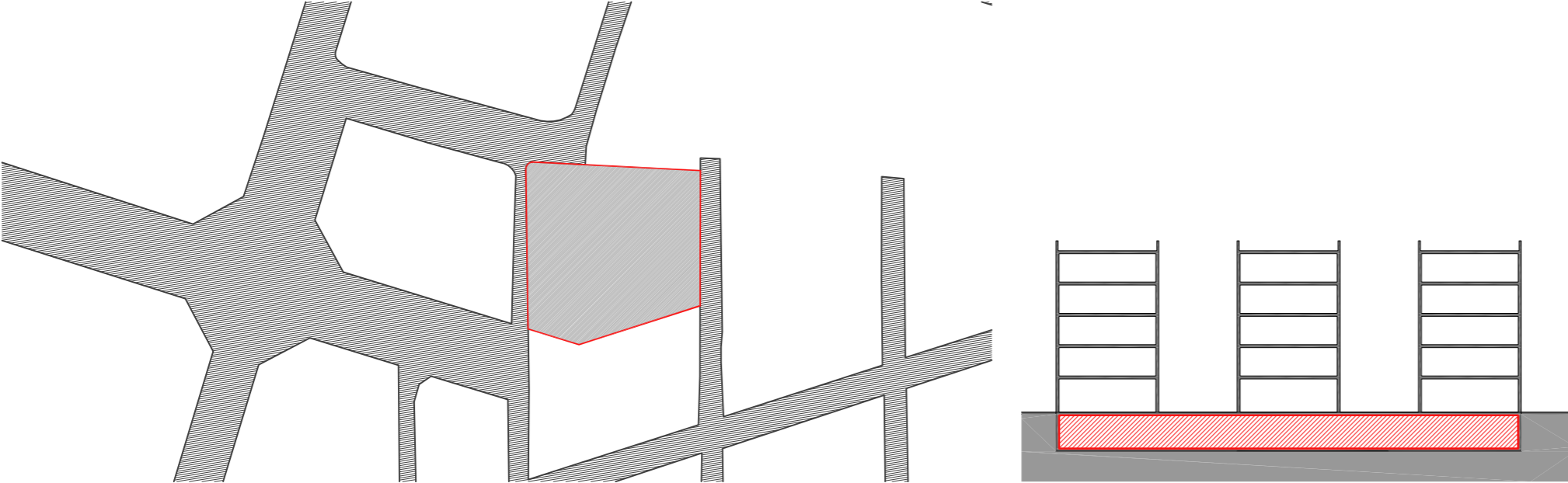
Edifici compacte i en alçada, situat a un costat del solar, per poder, així, disposar de tot l'espai lliure en planta com una sola peça



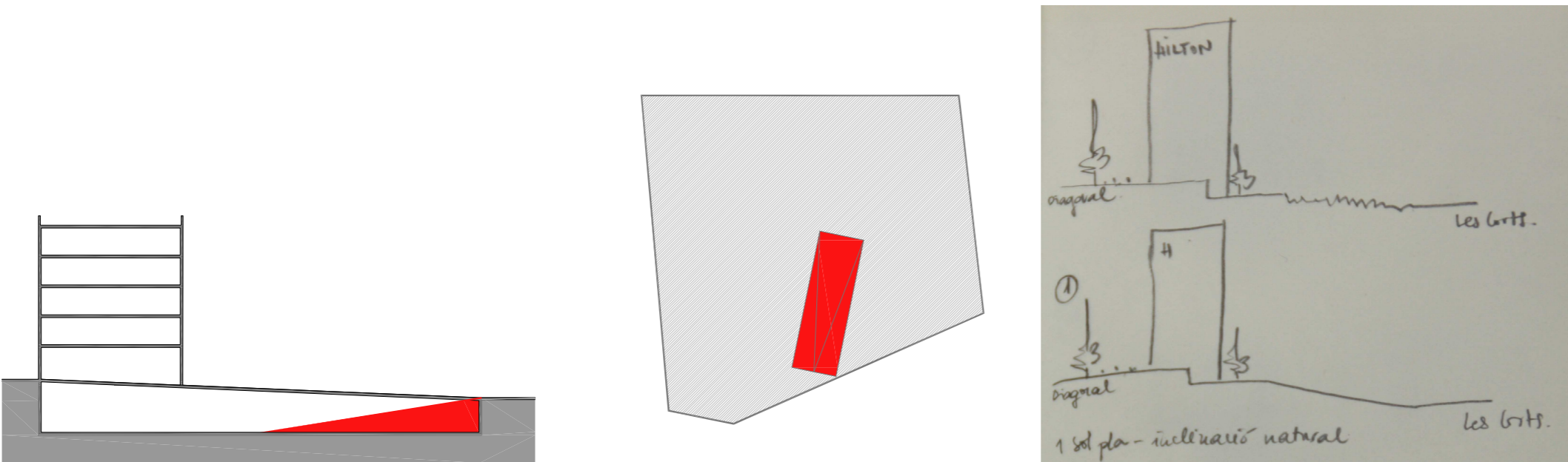
PLANTA BAIXA FRAGMENTADA (NO APTA PER ACOLLIR UN PROGRAMA COL·LECTIU D'HOTEL)



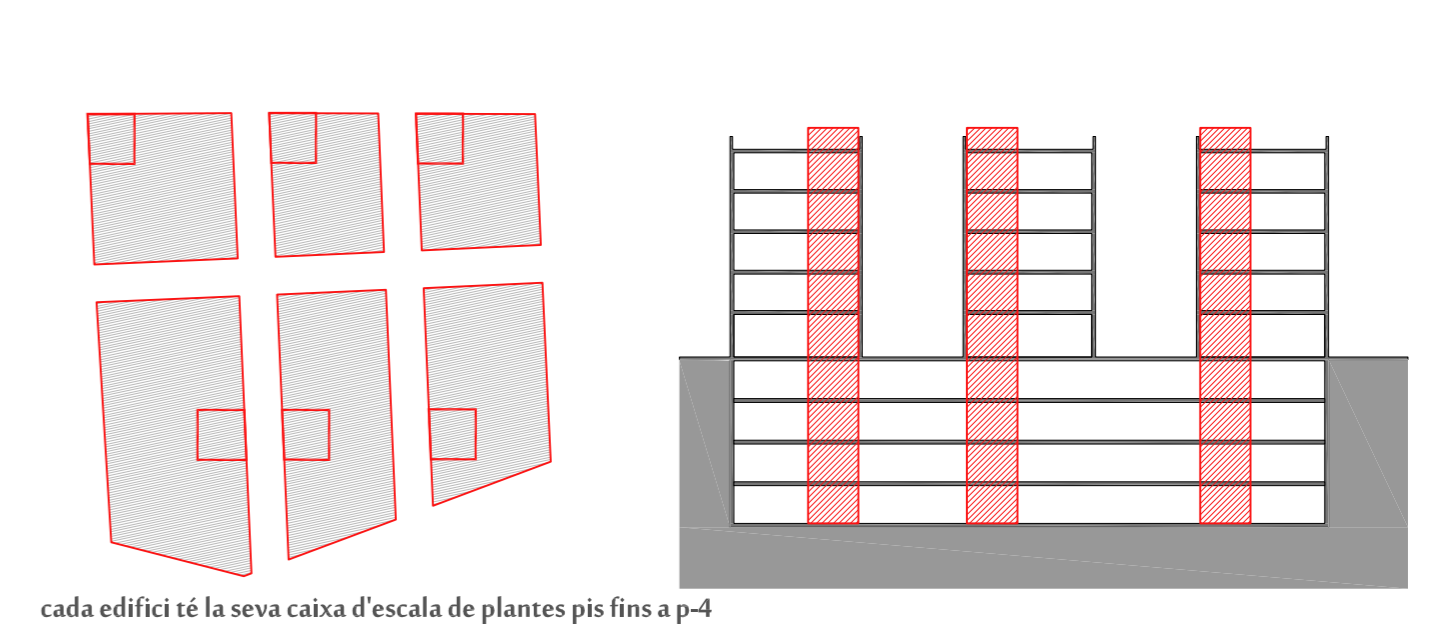
SITUAR EL PROGRAMA COL·LECTIU A LA PLANTA SOTERRANI



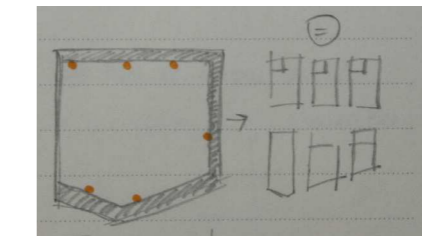
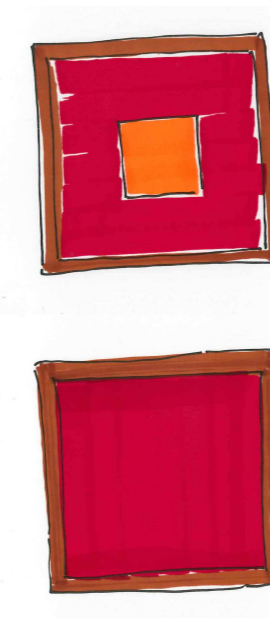
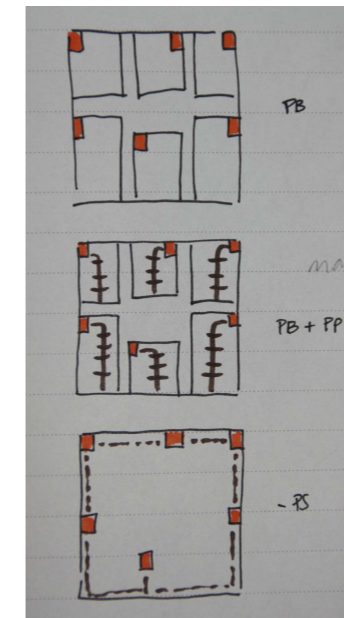
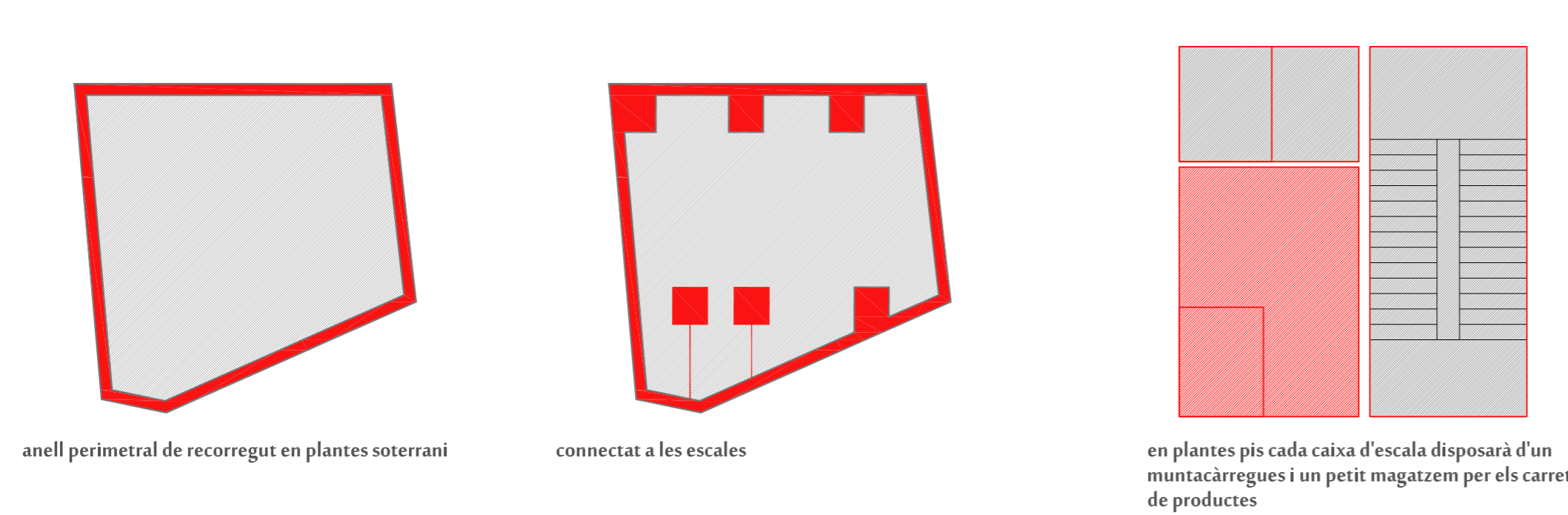
APROFITAR EL PENDENT NATURAL DEL TERRENY



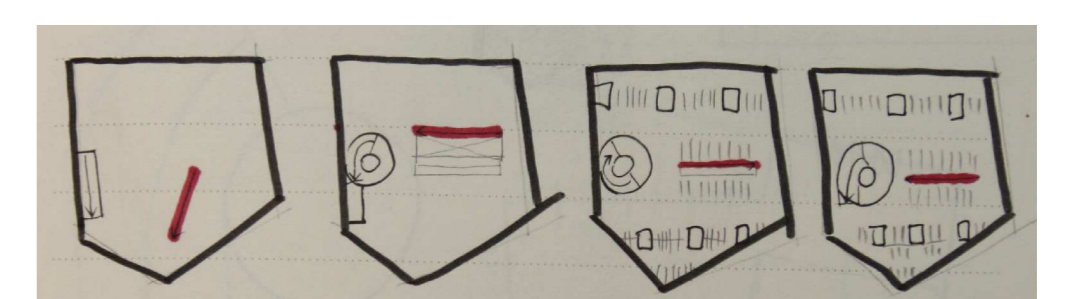
INDEPENDÈNCIA DELS EDIFICIS



RECORREGUTS DE SERVEI



RECORREGUTS D'ÚS COL·LECTIU EN PLANTES SOTERRANIS



REFERENTS - SANAA

