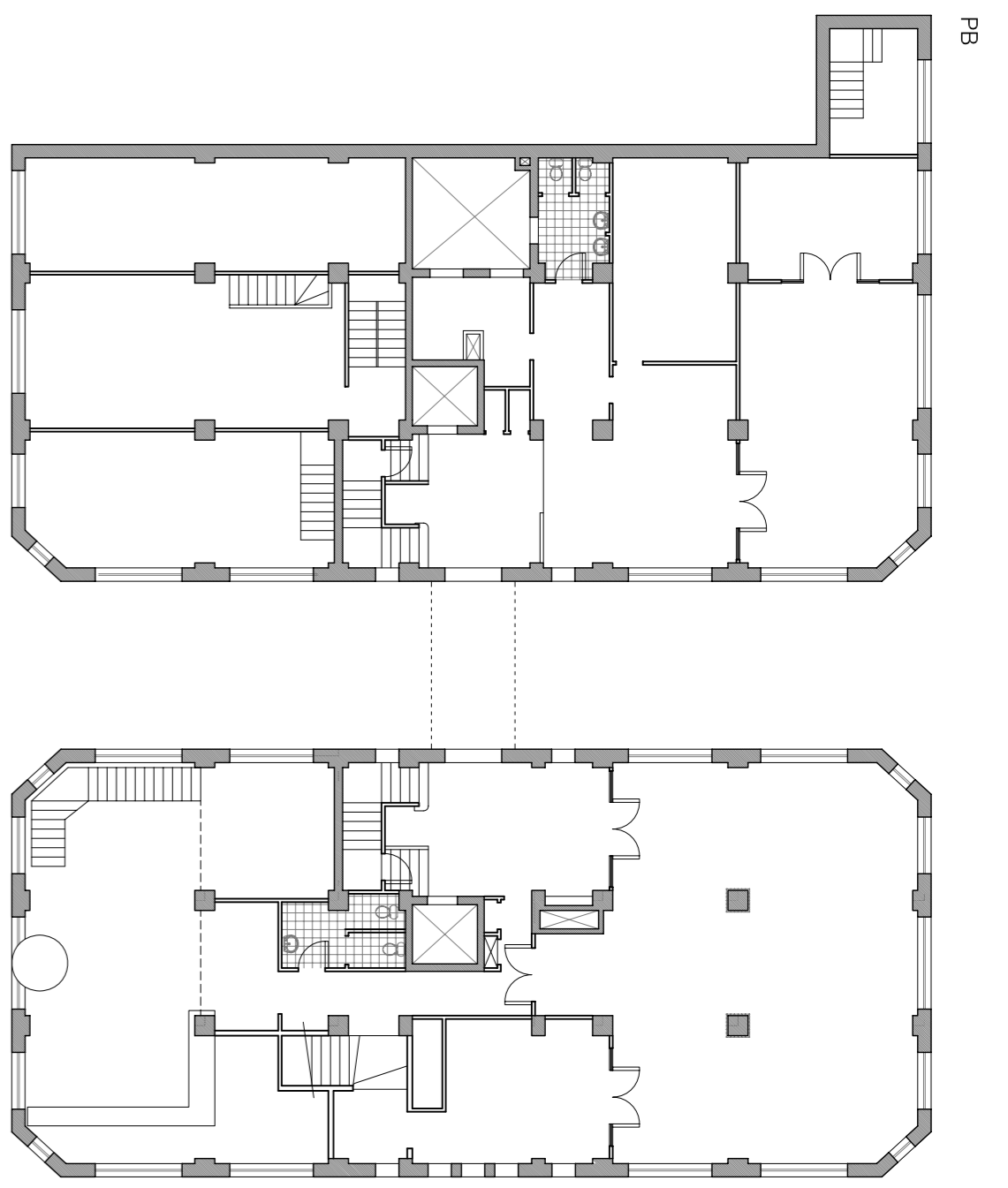
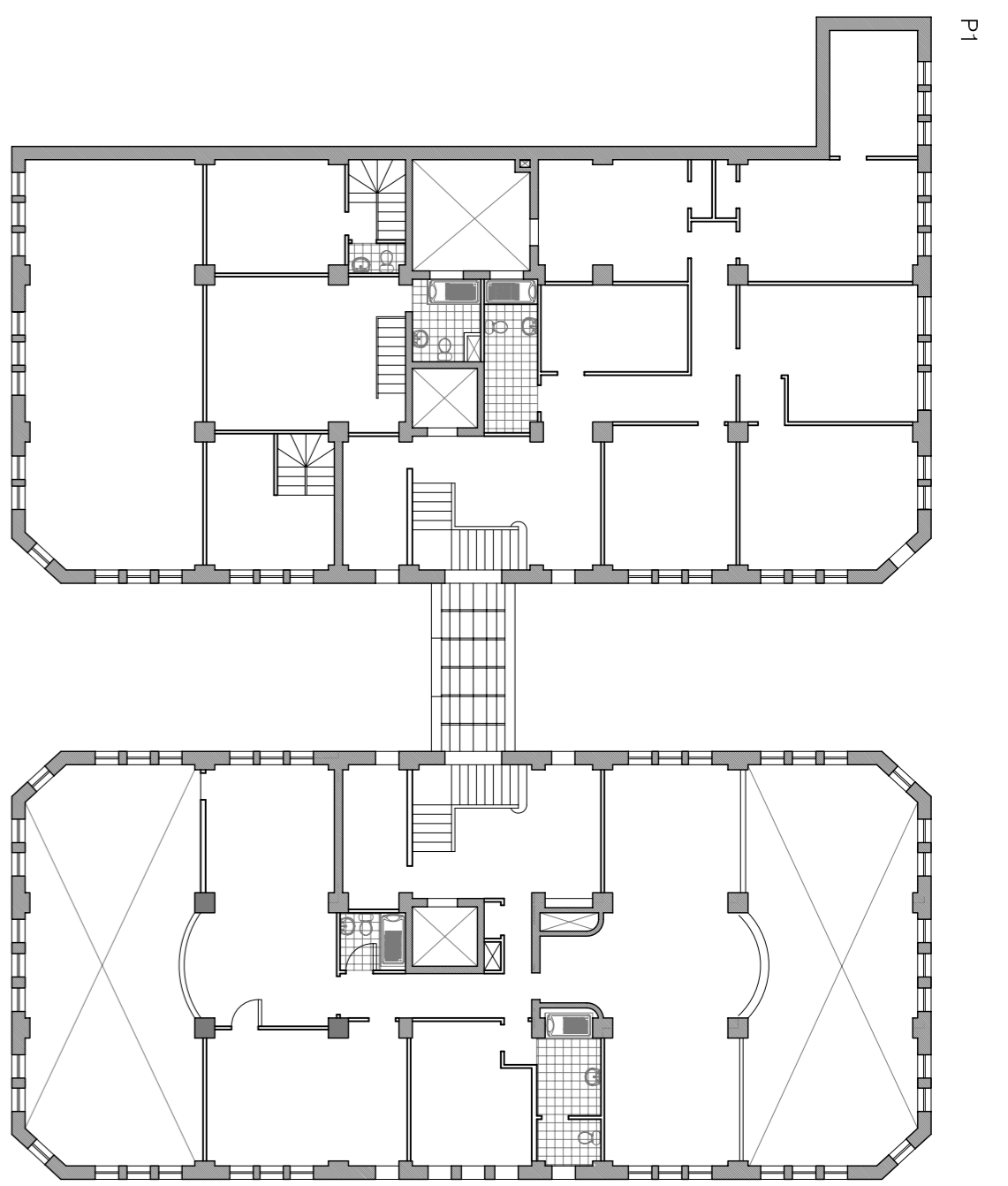


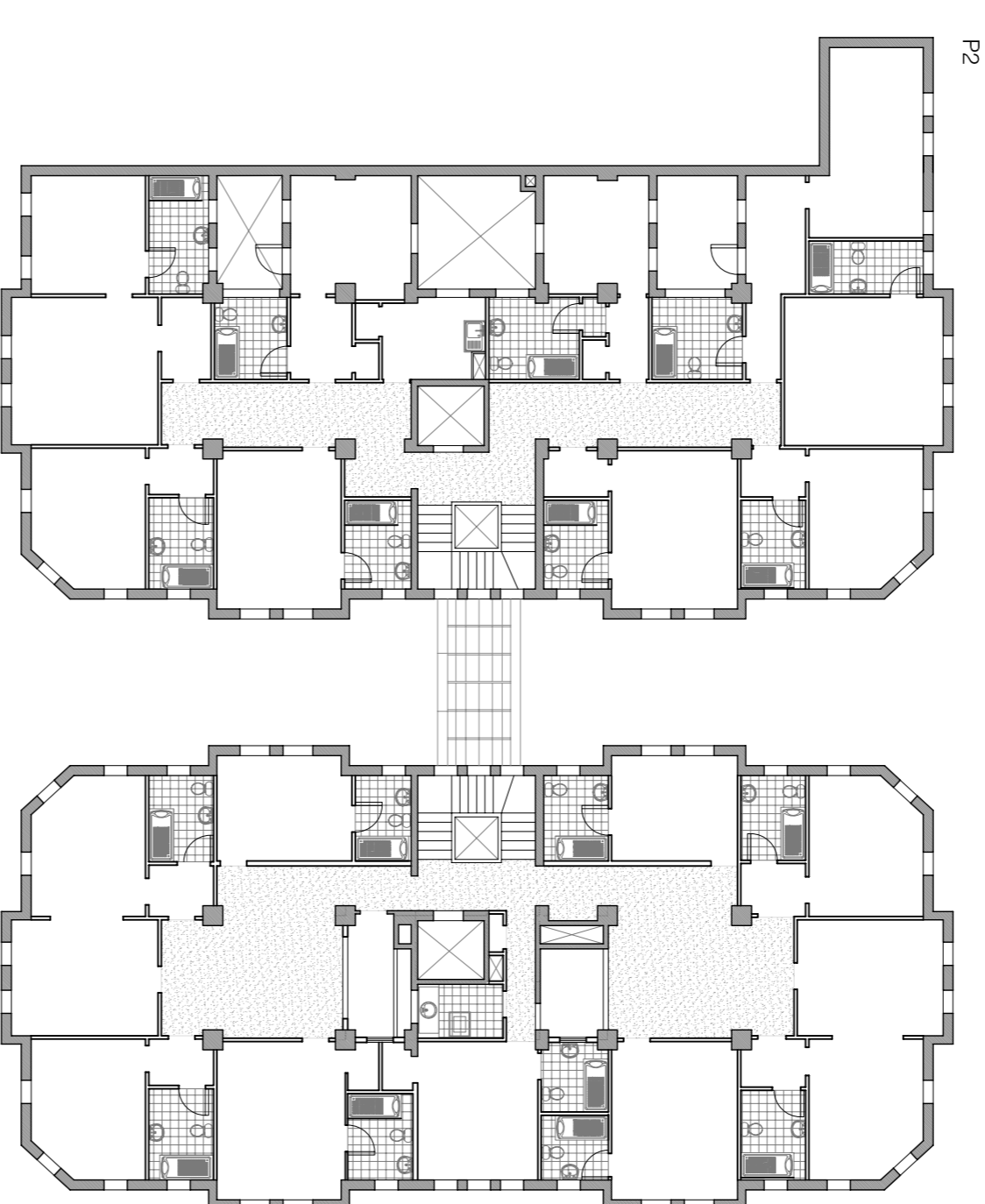
P-1



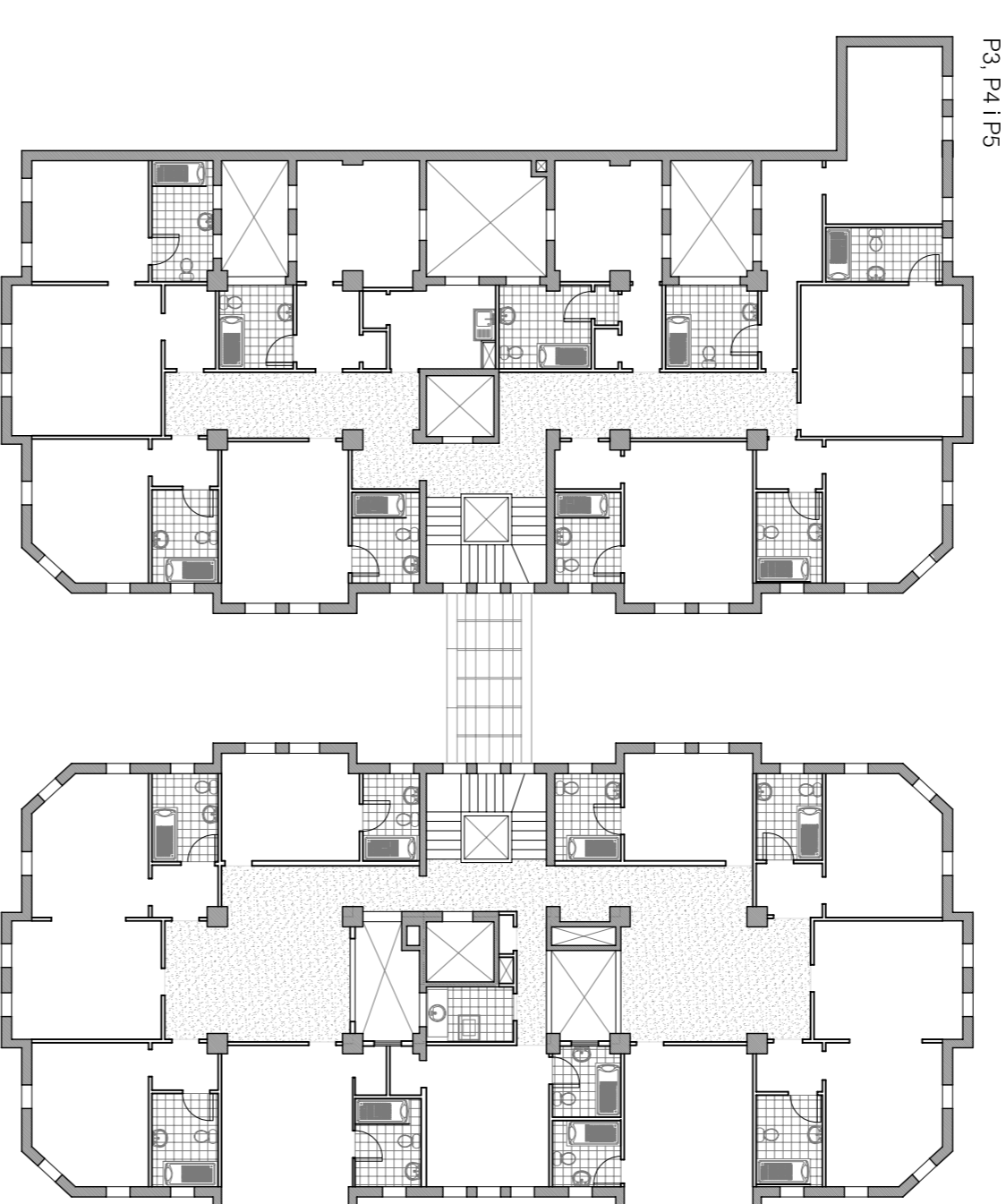
P2



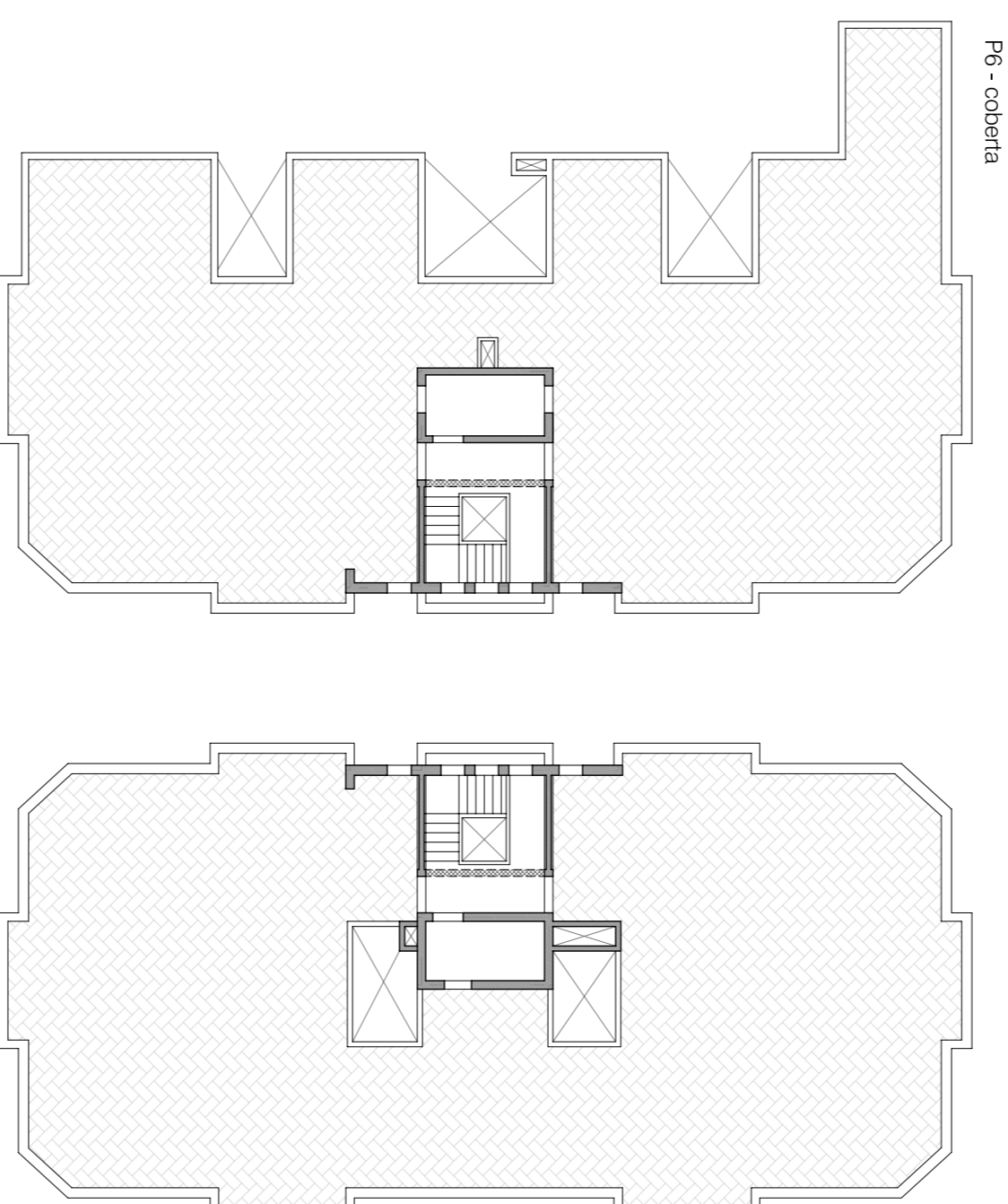
P3



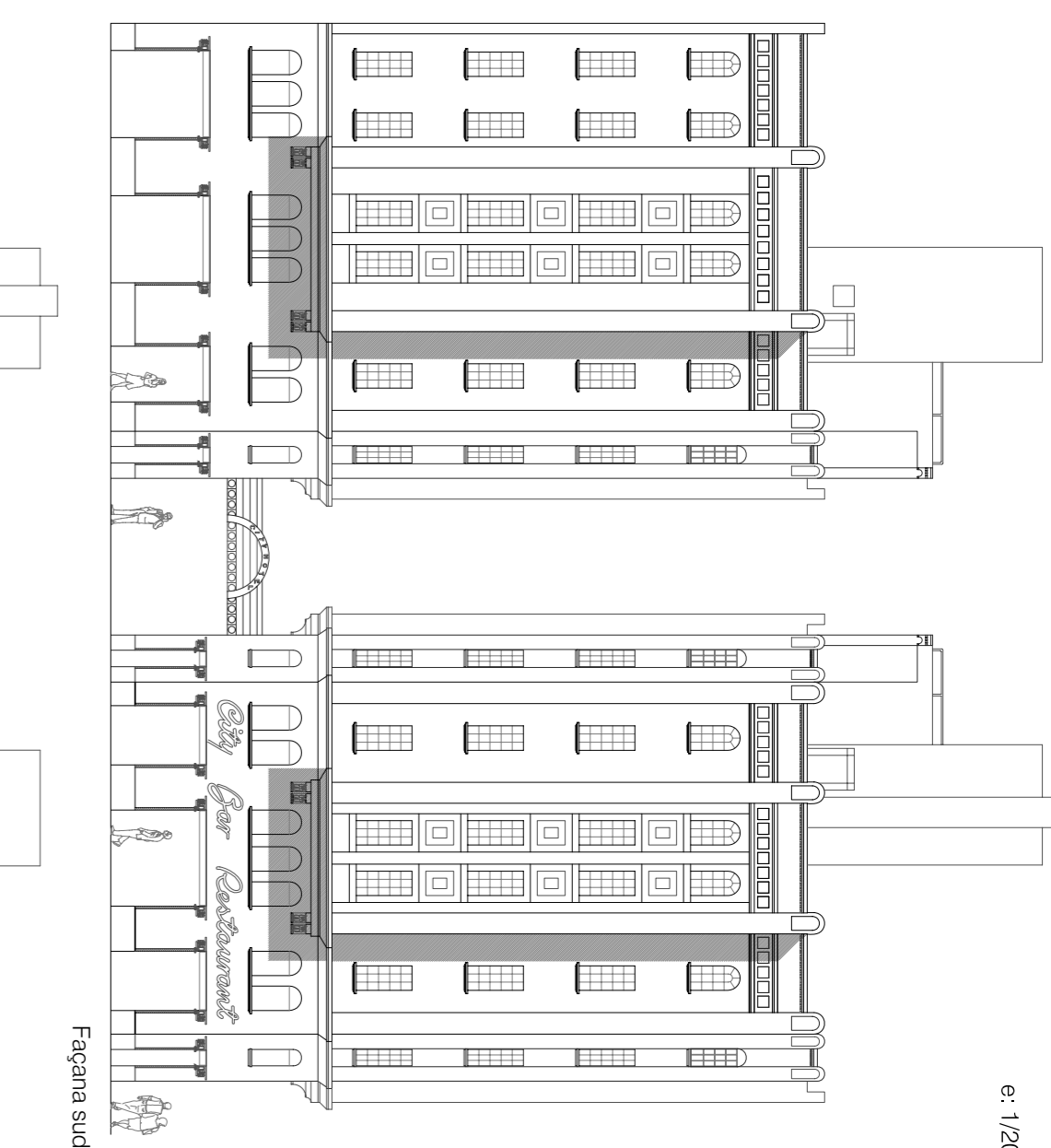
P4



P5

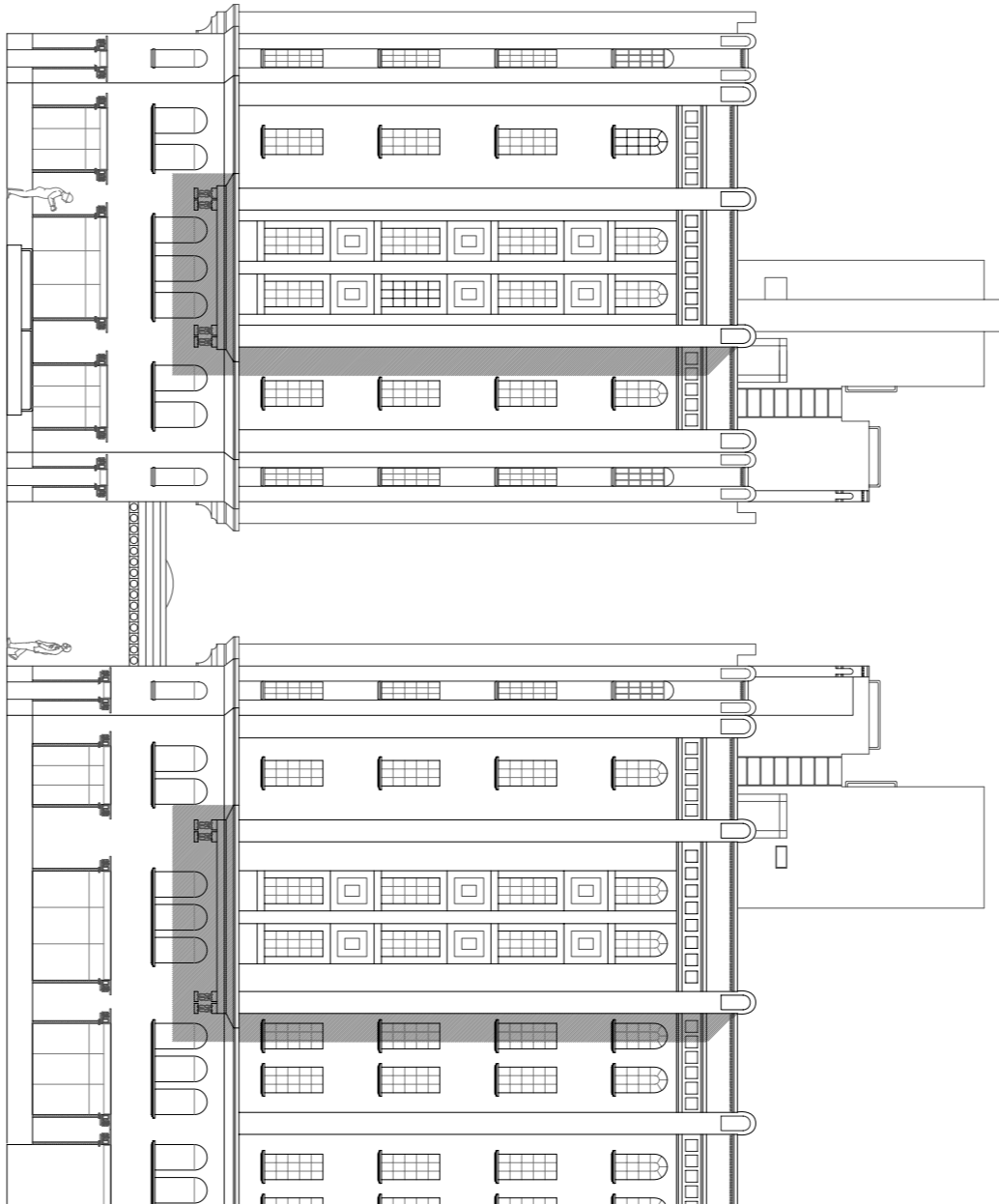


P6

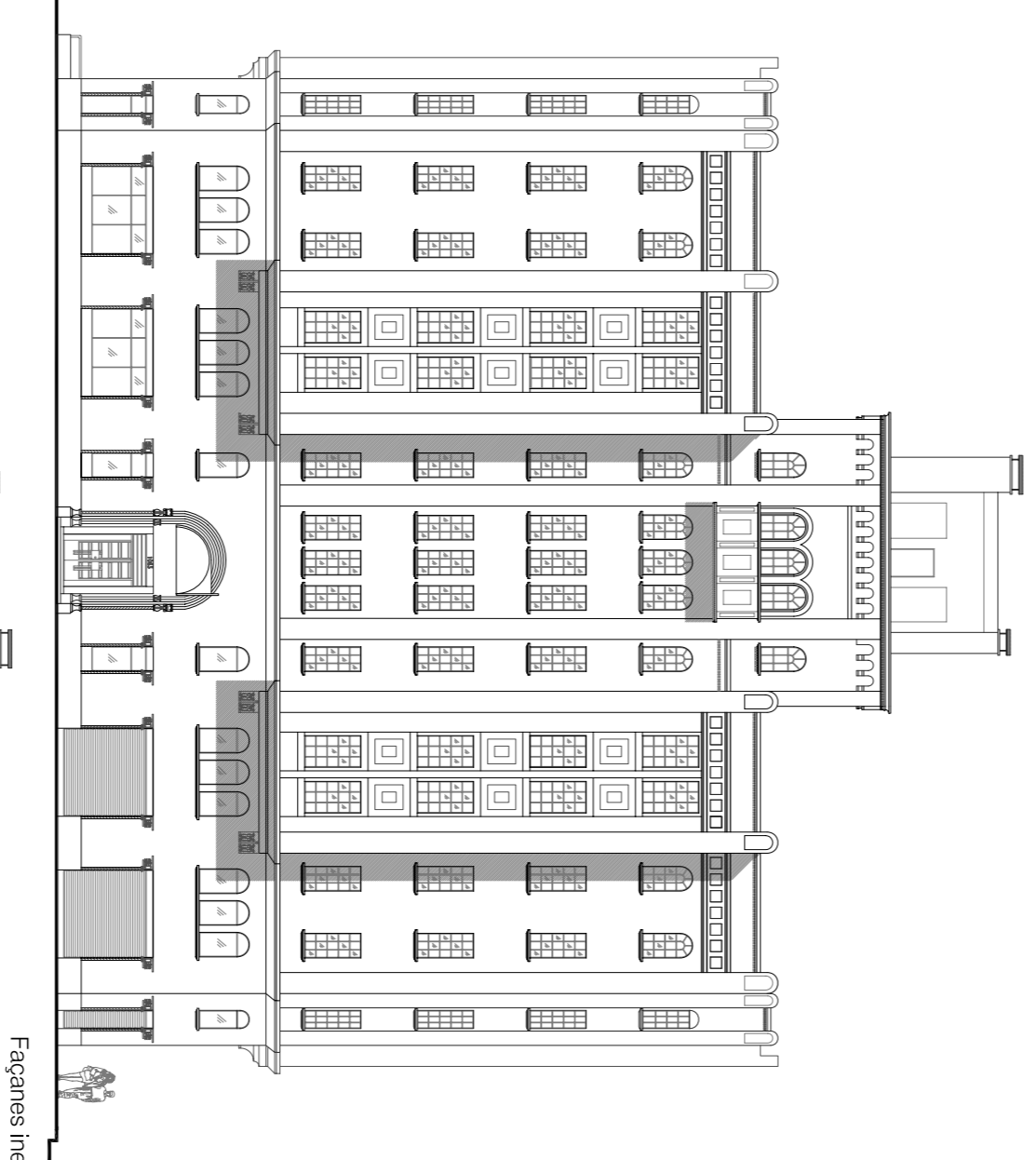


Fachada sud

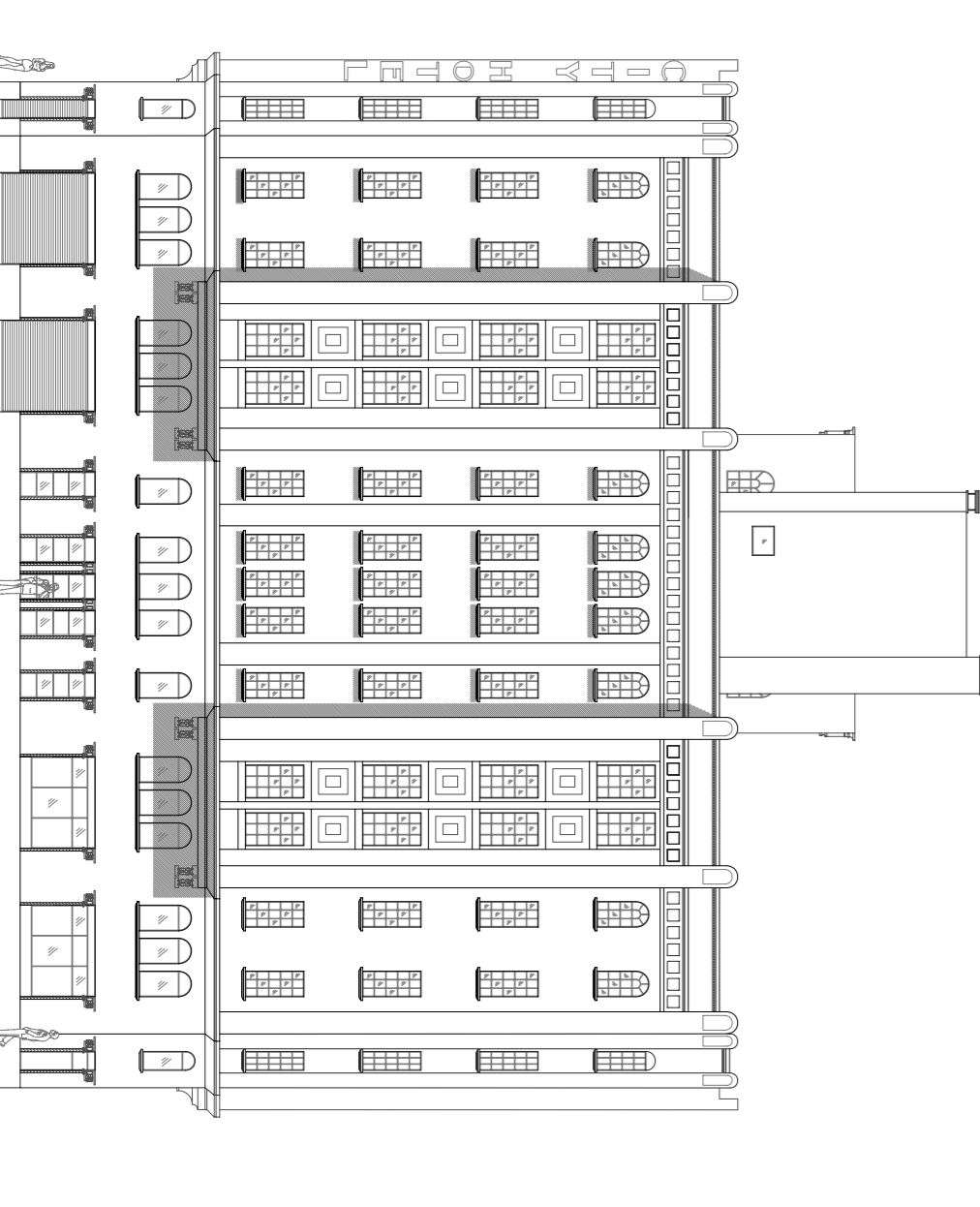
6: 1/200



Fachada nord



Fachadas interiores

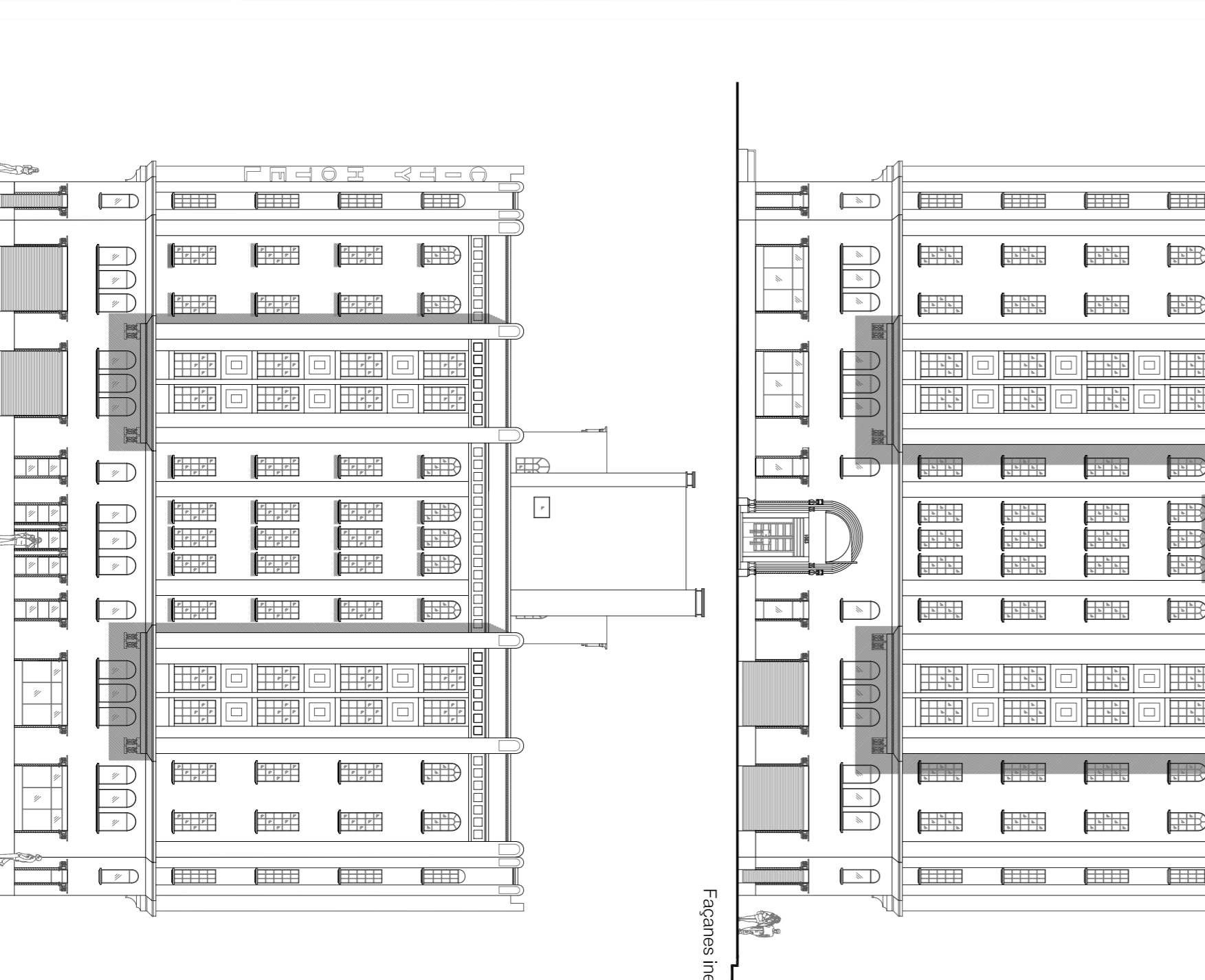
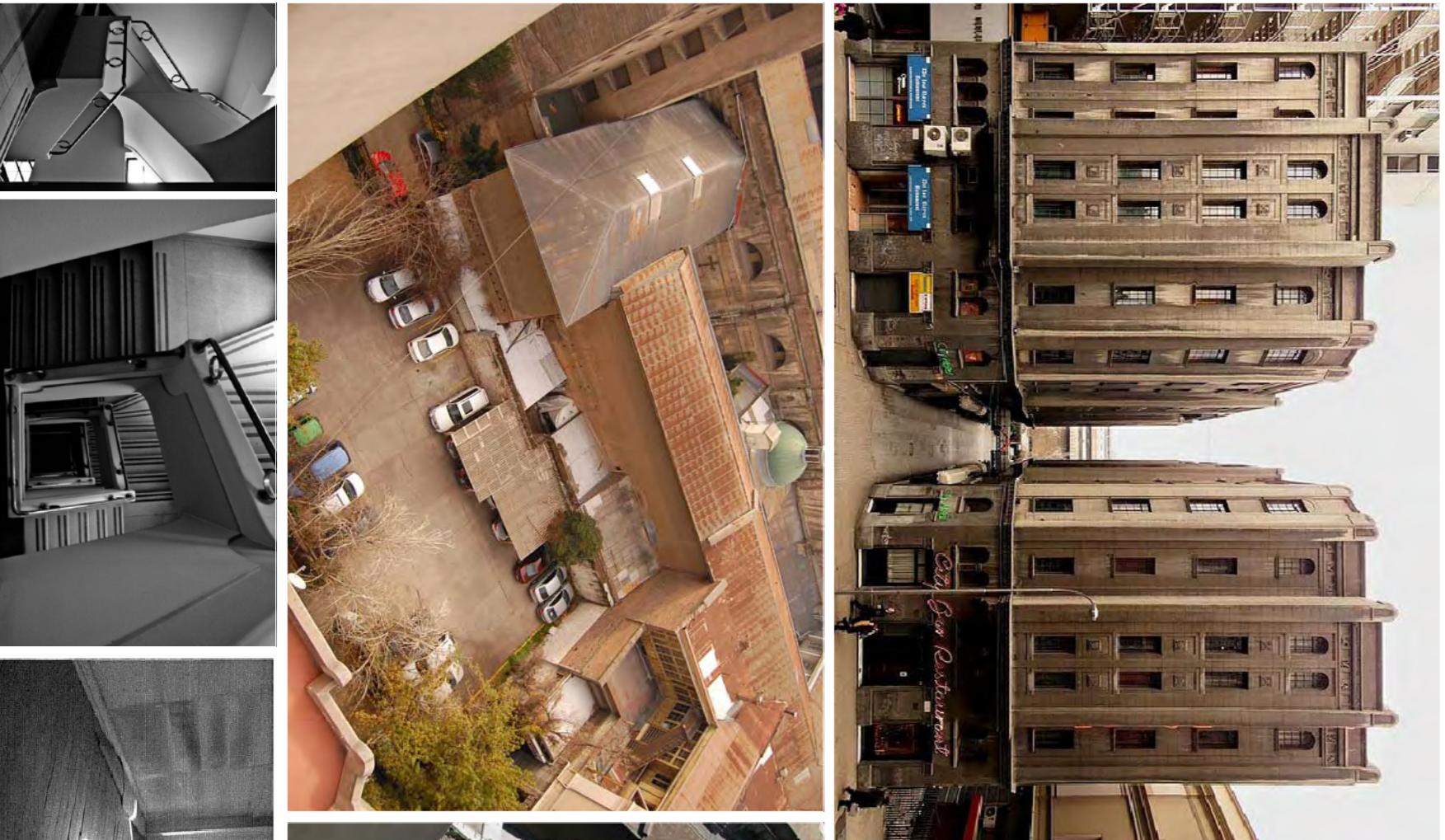
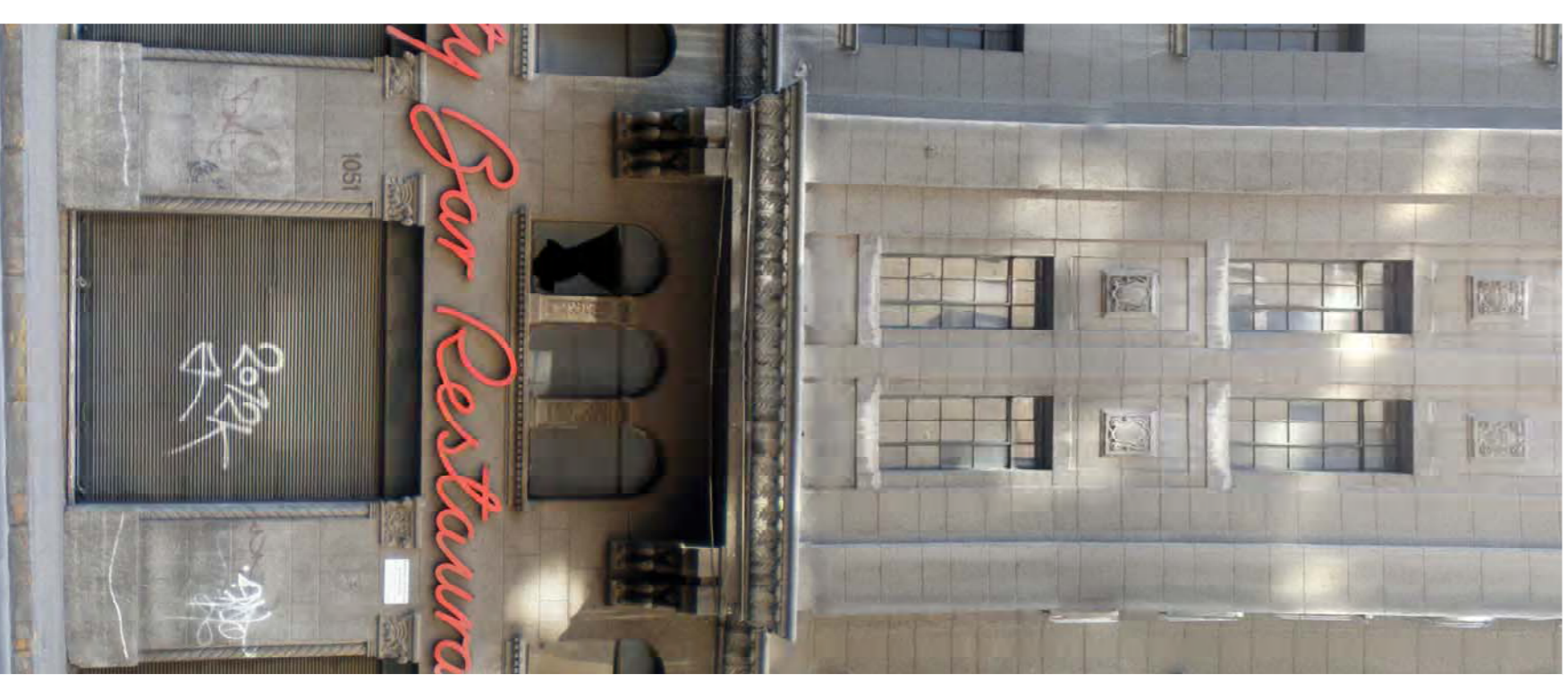
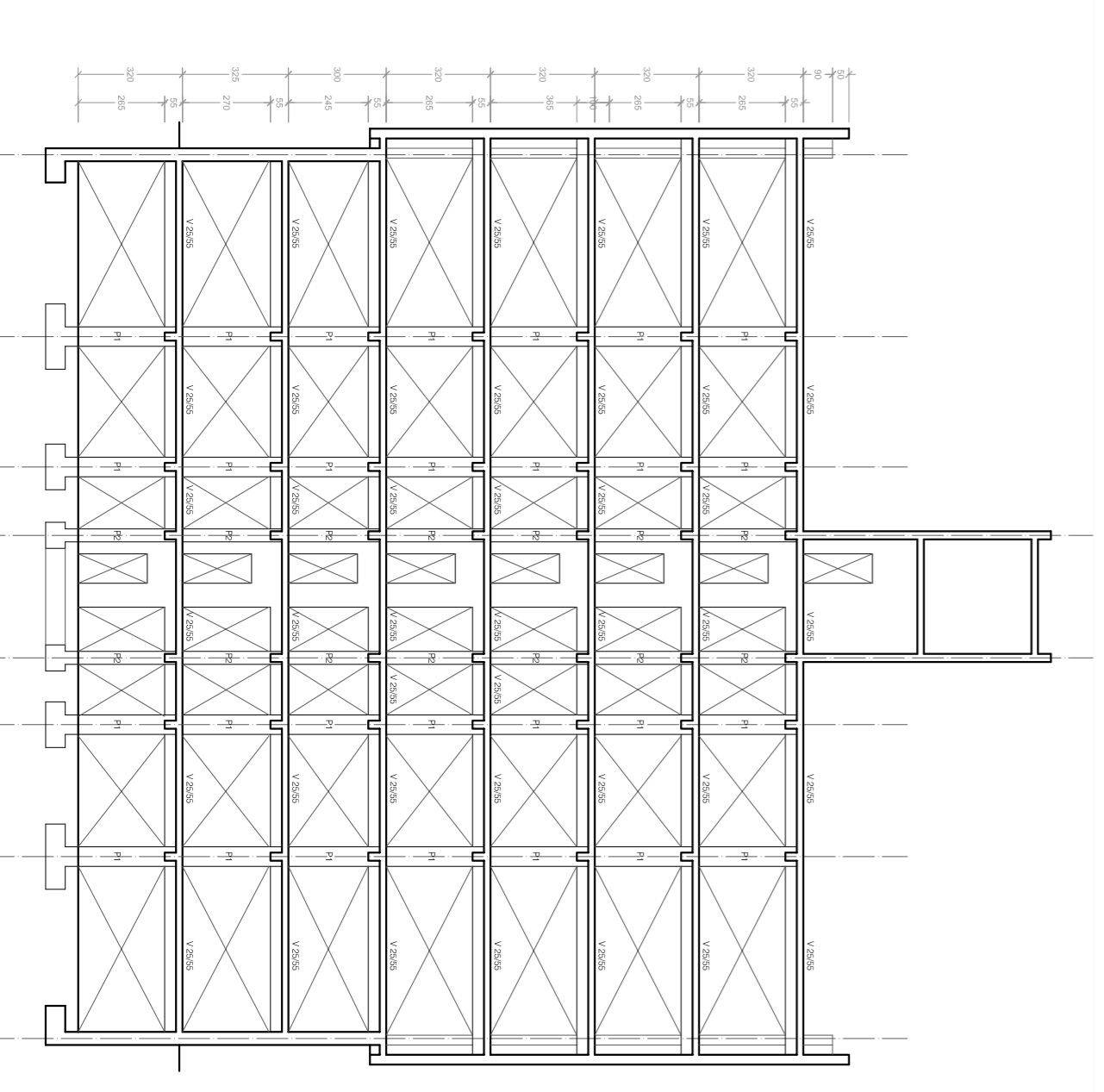


Fachada est

L'Hotel City es un edifici del 1937, dissenyat pel arquitecte Juan Velasco Sarmentes.

Es troba en la categoria de: **Inmóvil de Interès Històric - Artístic.** Aquel que posee característiques arquitectòniques, formals i espacials, totes com a resultat de la composició de factors: refinament de elements constructius, materialitat i tècniques constructives sobresortint, tipologia estructural singular, intervenció mínima, tendències o valors del immoble.

Intervenció mínima, tendències o valors del immoble.



Fachada est