

# scaffolds place

*diluting aparence*

An additional structure formed from pieces of scaffolding clings to some fronts, in front of the hollows, like a parasite that colonizes to generate a shaded place. A screen between the interior and exterior.  
Some parts of this structure are feasible, a simple blinds can be deployed on the scaffold tubes to provide protection.  
The defense is a chicken wire stretched between two tubes and stiffened with galvanized steel welded to the scaffold.

## railing

railing made with galvanized steel railing T profile obtained from PSI + tube profile 2cmØ.  
body max allowed light stands 250cm. defense of chicken wire stretched

## wood structures for floors

Floors formed by laminated wood beams forming sequence of 25cm apart. With tongue and groove plank flooring of 4cm horizontal mating element.

## heavy / light

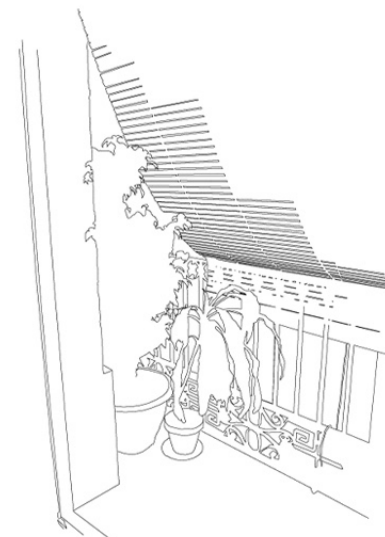
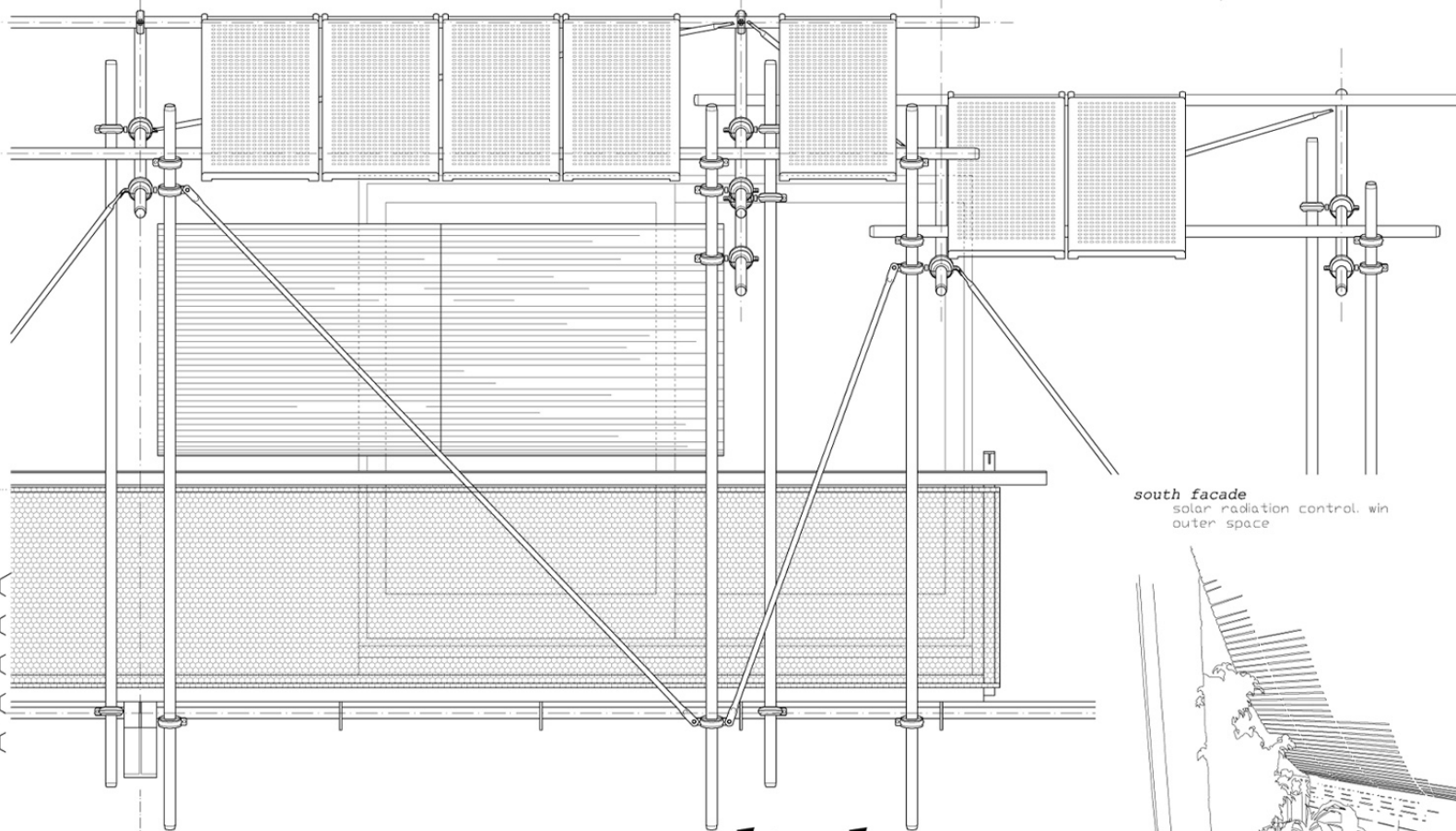
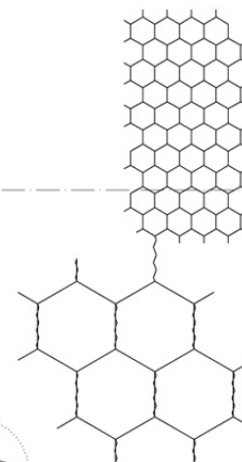
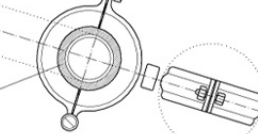
facade + decks on structure in steel  
floors of wood and steel

Curtain wall framing "steel-frame steel Aquapanel insulation system  
Finished in corrugated metal, shutters of galvanized steel frame finished in corrugated metal. Second skin of protective structure from pieces of scaffolding.

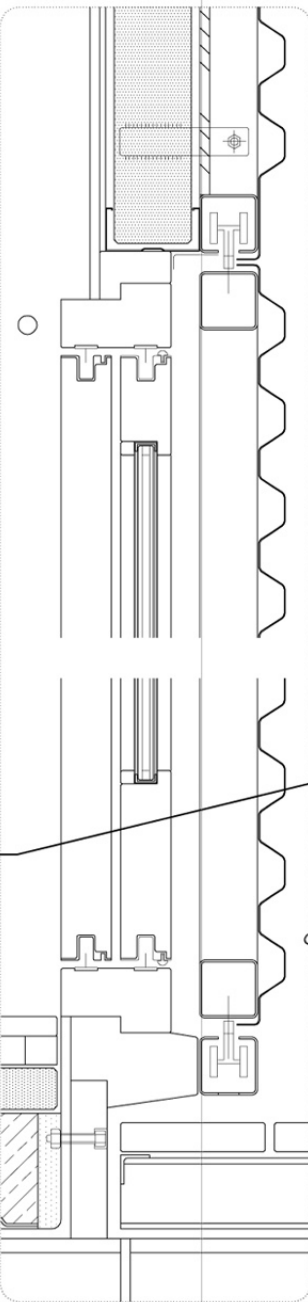
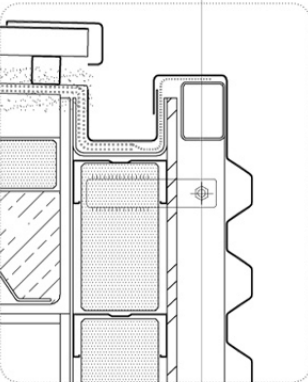
south facade  
solar radiation control win  
outer space

defense of chicken wire  
e:1/1

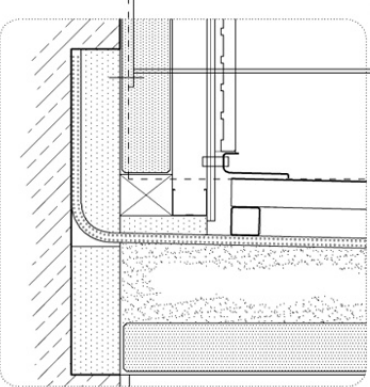
silent-blocks of neopren



d1



d2



ee44 ee37

ee45 ee46

ee46 ee46 ee49

d2

ee31 ee32 ee33

d1

ee37 ee36 ee35 ee34

ee21  
ee22  
ee39

ee31  
ee32  
ee32

ee38

d3

ee40 ee41

ee37

ee42

ee43