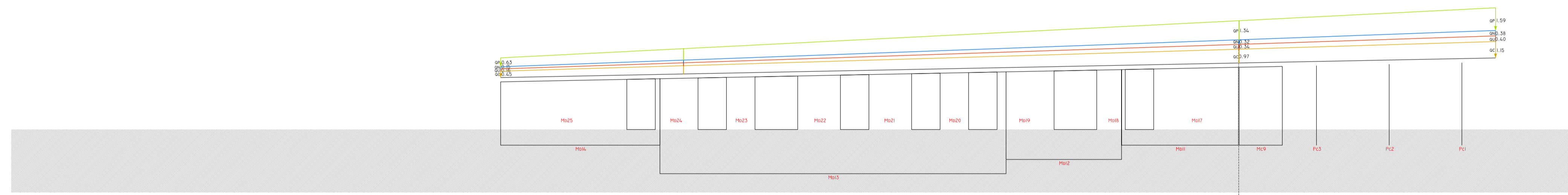
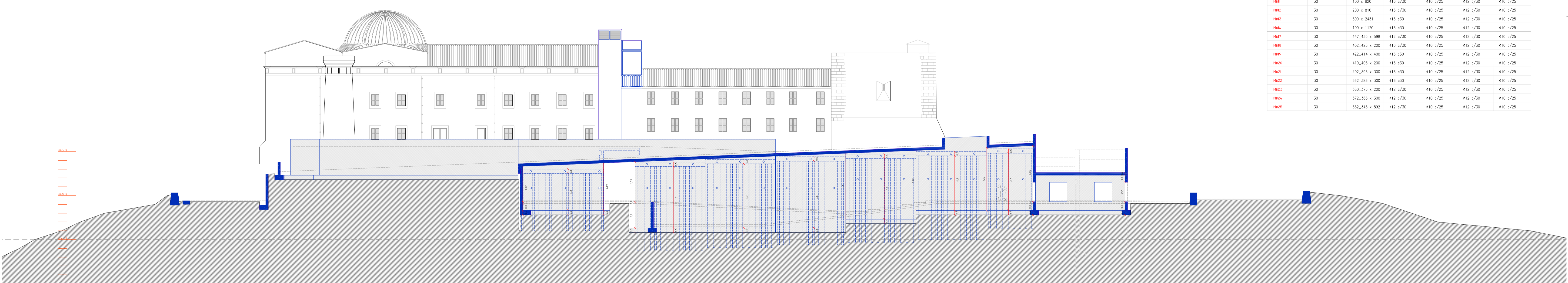


DISTRIBUCIÓ DE CÀRREGES :

- QP = PES PROPI KN (PREDIMENSIONAMENT)
- QN = CÀRREGA DE NEU KN
- QU = CÀRREGA D' US KN
- QC = CÀRREGA PERMANENT KN

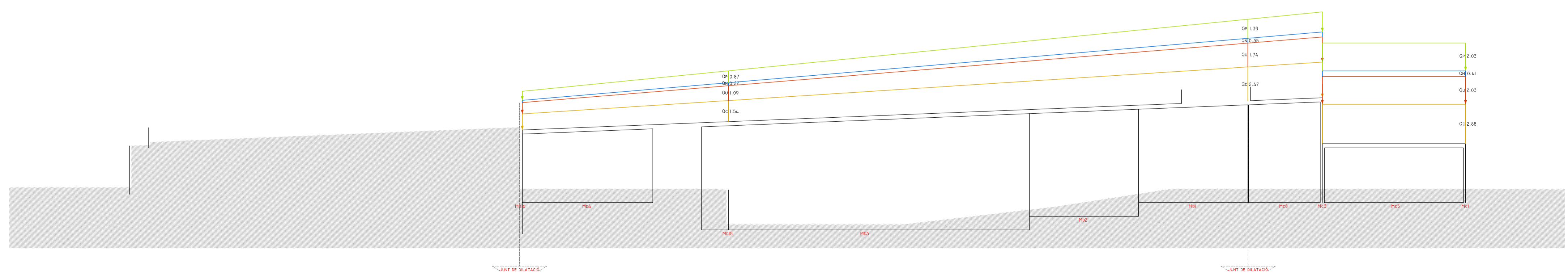


| REFERENCIA | DIAMETRE/GRUIX | ALÇAT (HxL) | QUADRE D'ARMATS DE PILARS I MURS | | | |
|------------|----------------|---------------|----------------------------------|------------|---------------------|------------|
| | | | ARMAT CARA EXTERIOR | | ARMAT CARA INTERIOR | |
| | | | VERTICAL | HORIZONTAL | VERTICAL | HORIZONTAL |
| PIL1 | ø 35 | 578 | 8 ø12 | ø6 c/15 | ø | ø |
| PIL2 | ø 35 | 568 | 8 ø12 | ø6 c/15 | ø | ø |
| PIL3 | ø 35 | 568 | 8 ø12 | ø6 c/15 | ø | ø |
| MUR9 | 30 | 555,547 x 303 | ø16 c/30 | ø10 c/25 | ø12 c/30 | ø10 c/25 |
| MUR11 | 30 | 100 x 820 | ø16 c/30 | ø10 c/25 | ø12 c/30 | ø10 c/25 |
| MUR12 | 30 | 200 x 810 | ø16 c/30 | ø10 c/25 | ø12 c/30 | ø10 c/25 |
| MUR13 | 30 | 300 x 2431 | ø16 c/30 | ø10 c/25 | ø12 c/30 | ø10 c/25 |
| MUR14 | 30 | 100 x 1120 | ø16 c/30 | ø10 c/25 | ø12 c/30 | ø10 c/25 |
| MUR17 | 30 | 447,435 x 598 | ø12 c/30 | ø10 c/25 | ø12 c/30 | ø10 c/25 |
| MUR18 | 30 | 432,428 x 200 | ø16 c/30 | ø10 c/25 | ø12 c/30 | ø10 c/25 |
| MUR19 | 30 | 422,414 x 400 | ø16 c/30 | ø10 c/25 | ø12 c/30 | ø10 c/25 |
| MUR20 | 30 | 410,406 x 200 | ø16 c/30 | ø10 c/25 | ø12 c/30 | ø10 c/25 |
| MUR21 | 30 | 402,396 x 300 | ø16 c/30 | ø10 c/25 | ø12 c/30 | ø10 c/25 |
| MUR22 | 30 | 392,386 x 300 | ø16 c/30 | ø10 c/25 | ø12 c/30 | ø10 c/25 |
| MUR23 | 30 | 380,376 x 200 | ø12 c/30 | ø10 c/25 | ø12 c/30 | ø10 c/25 |
| MUR24 | 30 | 372,366 x 300 | ø12 c/30 | ø10 c/25 | ø12 c/30 | ø10 c/25 |
| MUR25 | 30 | 362,345 x 892 | ø12 c/30 | ø10 c/25 | ø12 c/30 | ø10 c/25 |



DISTRIBUCIÓ DE CÀRREGES :

- QP = PES PROPI KN (PREDIMENSIONAMENT)
- QN = CÀRREGA DE NEU KN
- QU = CÀRREGA D' US KN
- QC = CÀRREGA PERMANENT KN



| REFERENCIA | DIAMETRE/GRUIX | ALÇAT (HxL) | QUADRE D'ARMATS DE PILARS I MURS | | | |
|------------|----------------|----------------|----------------------------------|------------|---------------------|------------|
| | | | ARMAT CARA EXTERIOR | | ARMAT CARA INTERIOR | |
| | | | VERTICAL | HORIZONTAL | VERTICAL | HORIZONTAL |
| MUR5 | 30 | 400 x 1047 | ø12 c/30 | ø10 c/25 | ø12 c/30 | ø10 c/25 |
| MUR8 | 30 | 735,714 x 525 | ø16 c/30 | ø10 c/25 | ø16 c/30 | ø10 c/25 |
| MUR1 | 30 | 714,682 x 800 | ø16 c/30 | ø10 c/25 | ø16 c/30 | ø10 c/25 |
| MUR2 | 30 | 782,750 x 800 | ø16 c/30 | ø10 c/25 | ø16 c/30 | ø10 c/25 |
| MUR3 | 30 | 850,753 x 2398 | ø16 c/30 | ø10 c/25 | ø16 c/30 | ø10 c/25 |
| MUR4 | 30 | 539,502 x 957 | ø16 c/30 | ø10 c/25 | ø16 c/30 | ø10 c/25 |
| MUR6 | 30 | 409 x 2334 | ø16 c/30 | ø10 c/25 | ø16 c/30 | ø10 c/25 |
| MUR7 | 30 | 409 x 1008 | ø16 c/30 | ø10 c/25 | ø16 c/30 | ø10 c/25 |