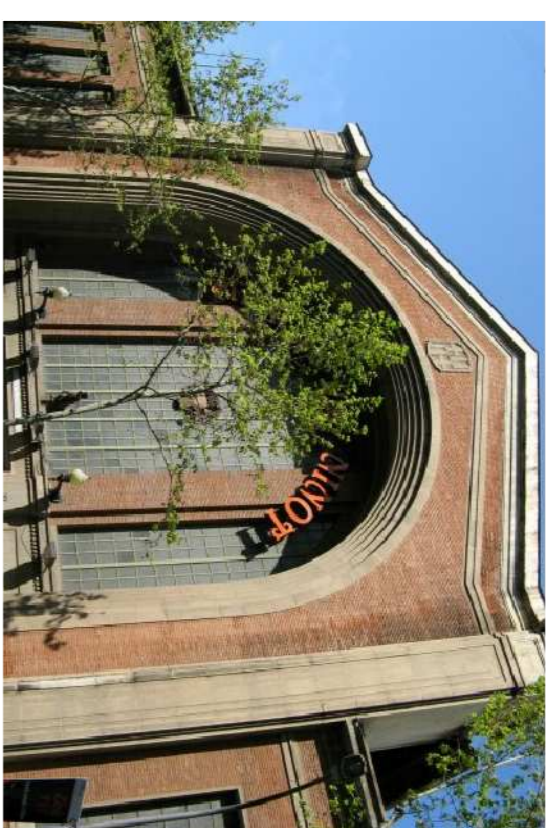


# 10. ALÇATS EXTERIORS

## MATERIALS: EL MAÓ VIST I EL VIDRE

La combinació de maó vist i vidre es la dominant de la zona, tant en edificis públics com en vivendes. El toixó aporta solidesa i atemporalitat i el vidre s'usa per les obertures.

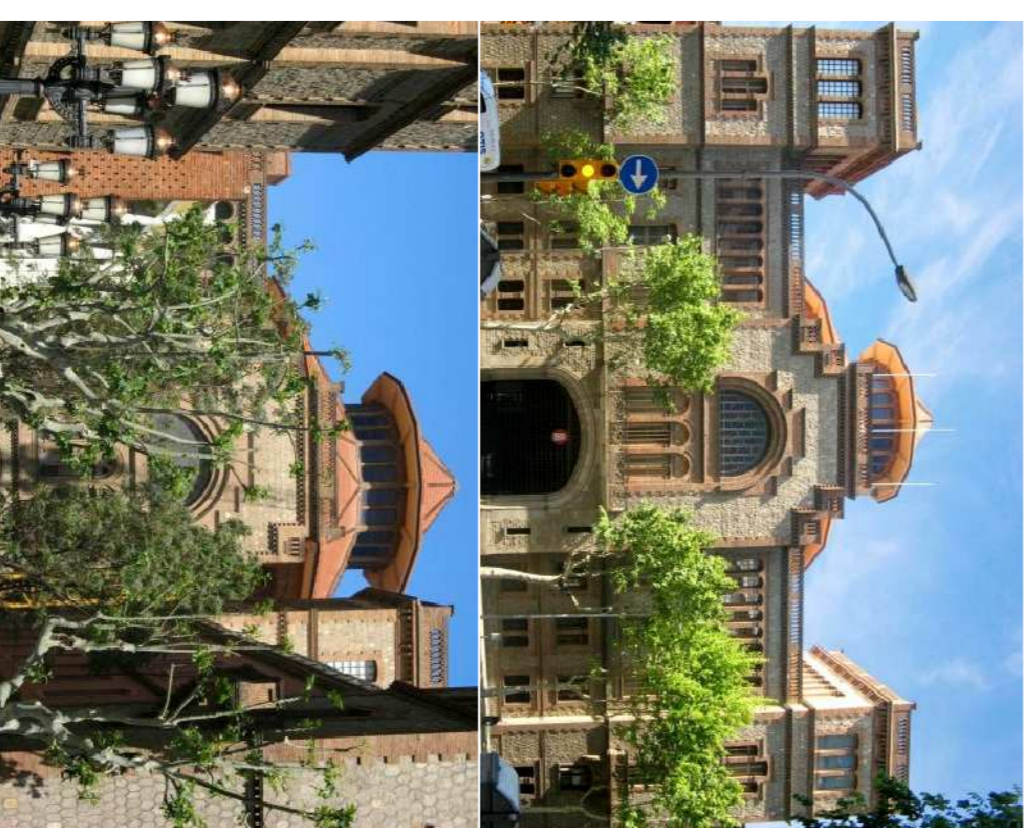
Mercat del Ninot



Hospital Clínic



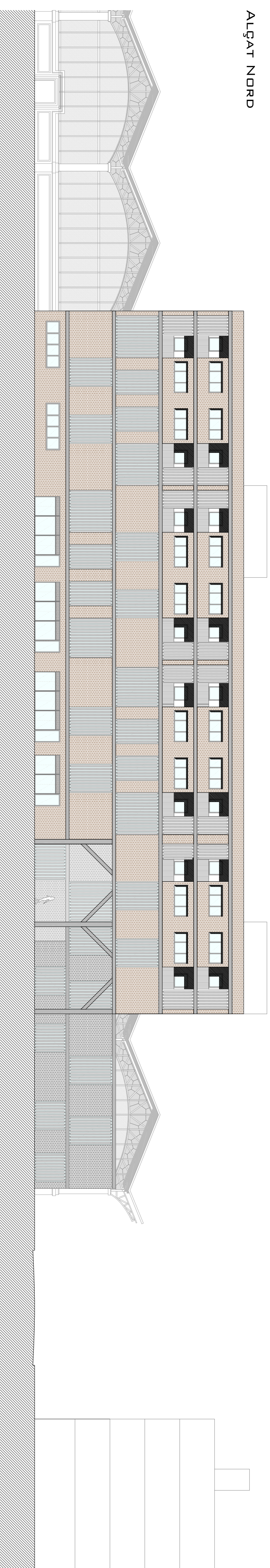
Escola Industrial



Vivendes

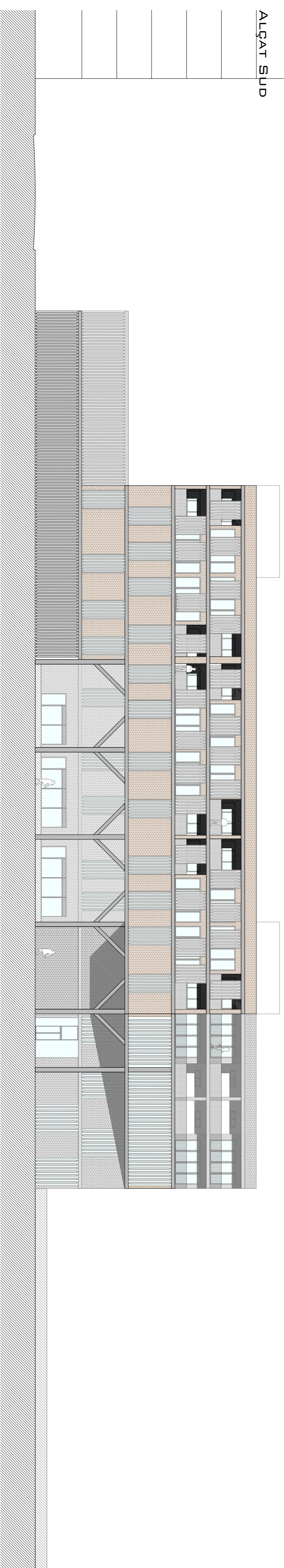


ALÇAT NORD



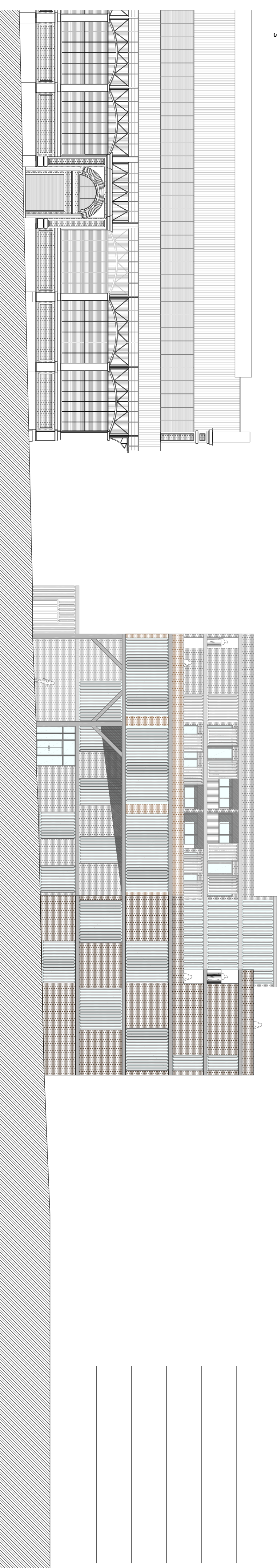
E:1/200

ALÇAT SUD



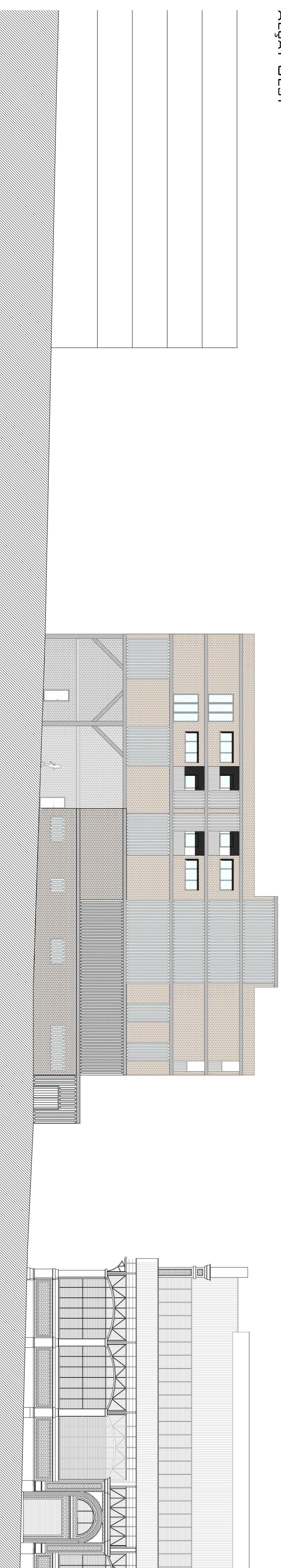
E:1/200

ALÇAT EST



E:1/200

ALÇAT OEST



E:1/200